

Aylesbury Vale Councillor Update Economic Profile of Wingrave Ward



April 2014



**VALE BUSINESS FLOOR SPACE
GREW BY 43,000m²
FROM 2008-2012**



**VERY SMALL COMPANIES
IN VALE 76% EMPLOYING
FEWER THAN 5 PEOPLE**



**10% OF
VALE WORKERS
ARE HOME BASED**

1.0 Introduction

Wingrave is home to 2,591 people and provides 800 jobs in 150 businesses. Of these businesses, 19 (7.5 per cent) are Buckinghamshire Business First members.

There were 1,395 employed people aged 16-74 living in Wingrave ward at the 2011 Census, one more than the 1,396 recorded in 2001. Over that period the working age population fell 100 to 1,694 while the total population fell 90 to 2,591. The number of households rose by 22 (2.1 per cent) to 1,062. **This isn't a significant percentage increase** and only places the ward 22nd out of all wards in Aylesbury Vale. Based on the increase in number of households, the ward ranks 81st out of all wards in Buckinghamshire.

The largest companies in Wingrave include:

- Macintyre School;
- Organisation Development & Research Limited;
- Prime Care;
- Gray Russ;
- Taylor Roberts Ltd;
- Colmet Precision Ltd; and
- Il Maschio Ltd.

There are 19 **Job Seekers' Allowance claimants living in Wingrave**, representing 1.1 per cent of working age residents, including five claimants aged 18-24 and five who have been claiming for more than twelve months.

Superfast broadband is expected to be available to 89 per cent of premises in the Wingrave ward by March 2016 with commercial providers responsible for 4 per cent. The Connected Counties project, run by BBF, deliver the remaining 96 per cent through its interventions in Cheddington, Stewkley and Wing exchange areas. BBF is seeking to deliver an extended superfast footprint via additional funding, adaptation of downstream technology and contract claw-back mechanism.

At the time of the 2001 Census¹, of the 1,416 employed residents, 381 people lived and worked in the ward, with the most common destinations by local authority district being:

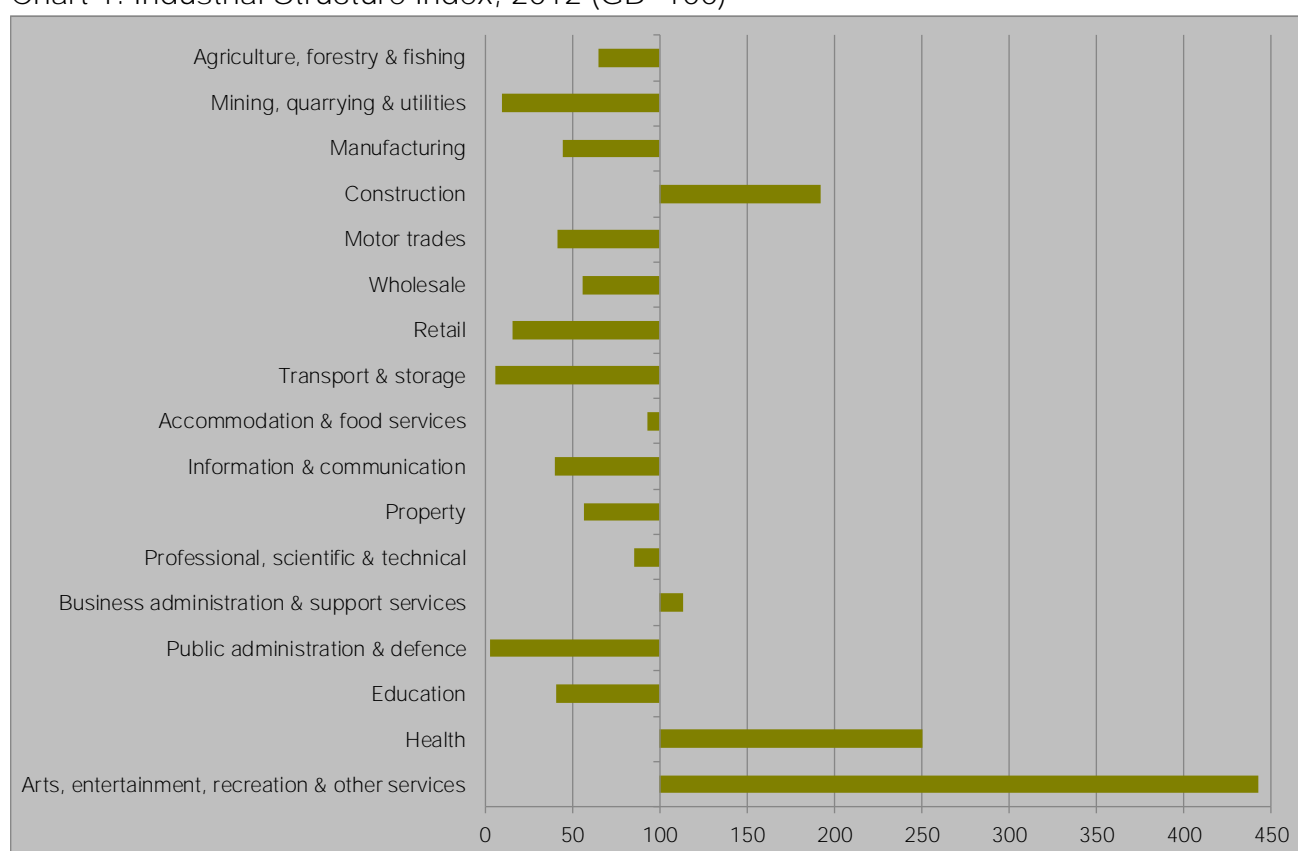
- Aylesbury Vale (800, 56.5)
- Central Bedfordshire (90, 6.4)
- Dacorum (90, 6.4)
- Milton Keynes (43, 3.0)
- Wycombe (40, 2.8)
- Westminster (34, 2.4)
- Chiltern (31, 2.2)
- Camden (29, 2.0)

2.0 Industrial structure

There are 150 businesses located in Wingrave employing 800 people. Of these businesses, 127 are micro businesses, employing fewer than 10 people.

Wingrave is over-represented predominantly in arts, entertainment, recreation and other services which accounts for 19.9 per cent of all employment in the ward. This ranks the ward 169th out of all wards for employment in the sector. Another over-represented sector in the ward is health which accounts for 32.8 per cent of employment in the ward. This ranks the ward 633rd out of all wards. Construction is patronised to a lesser extent at only 8.9 per cent and business administration to a lesser extent still at 9.3 per cent. The ward is ranked 2,159th and 1,568th respectively based on these proportions.

Chart 1: Industrial Structure Index, 2012 (GB=100)



Source: BRES, ONS, 2013

The public administration and defence sector accounts for only 0.1 per cent of employment in the ward giving a rank of 5,158th out of all wards. Another sector which is under-represented is transport and storage which accounts for only 0.3 per cent of employment ranking the ward at 7,449th out of all wards.

2.1 The Industrial Strategy and the Plan for Growth

The Government's economic objective is to secure sustainable economic growth. The Plan for Growth and the Industrial Strategy set out policies to realise this objective and to rebalance the economy, which include focusing on sectors expected to deliver strong growth. Aylesbury Vale's economy is well-represented in these sectors, particularly aerospace, the information economy and professional and business services.

While Wingrave provides jobs in these sectors, the industrial strategy sector where the ward delivers the highest share of national employment is professional & business services, which accounts for 14.9 per cent of employment, ranking Wingrave at 1,363rd among English wards. The proportions of jobs in Wingrave in Industrial Strategy sectors are presented in Table 1.

Table 1: Employment in selected industrial strategy sectors, 2012

	Education	Professional and Business Services	Construction	Information Economy
Aylesbury Vale	10.1	16.3	5.4	2.7
Buckinghamshire	9.3	15.0	5.5	4.4
England	4.6	12.9	4.6	3.0
Wing	3.8	14.9	7.5	1.3

Source: BRES, ONS, 2013

At 7.5 per cent, the proportion of Wingrave's jobs in the construction sector is the 2,471st highest of all wards in England, the proportion is above that of both the county level and the district level.

3.0 Labour market

At 70.4 per cent of 16-74 year olds, Wingrave's employment rate is among the highest in the country. Wingrave has a proportion of 39.3 per cent of its residents qualified to degree level or higher. Furthermore, 55.0 per cent work in managerial, professional or technical occupations.

In Aylesbury Vale the wards most similar to Wingrave are Great Horwood, Cheddington and Great Brickhill with 20 of the other 35 wards among the top thousand closest matches. The least similar ward in the district is Soutcourt, one of three wards in Aylesbury to rank lower than the 6,000th closest match along with Gatehouse and Quarrendon.

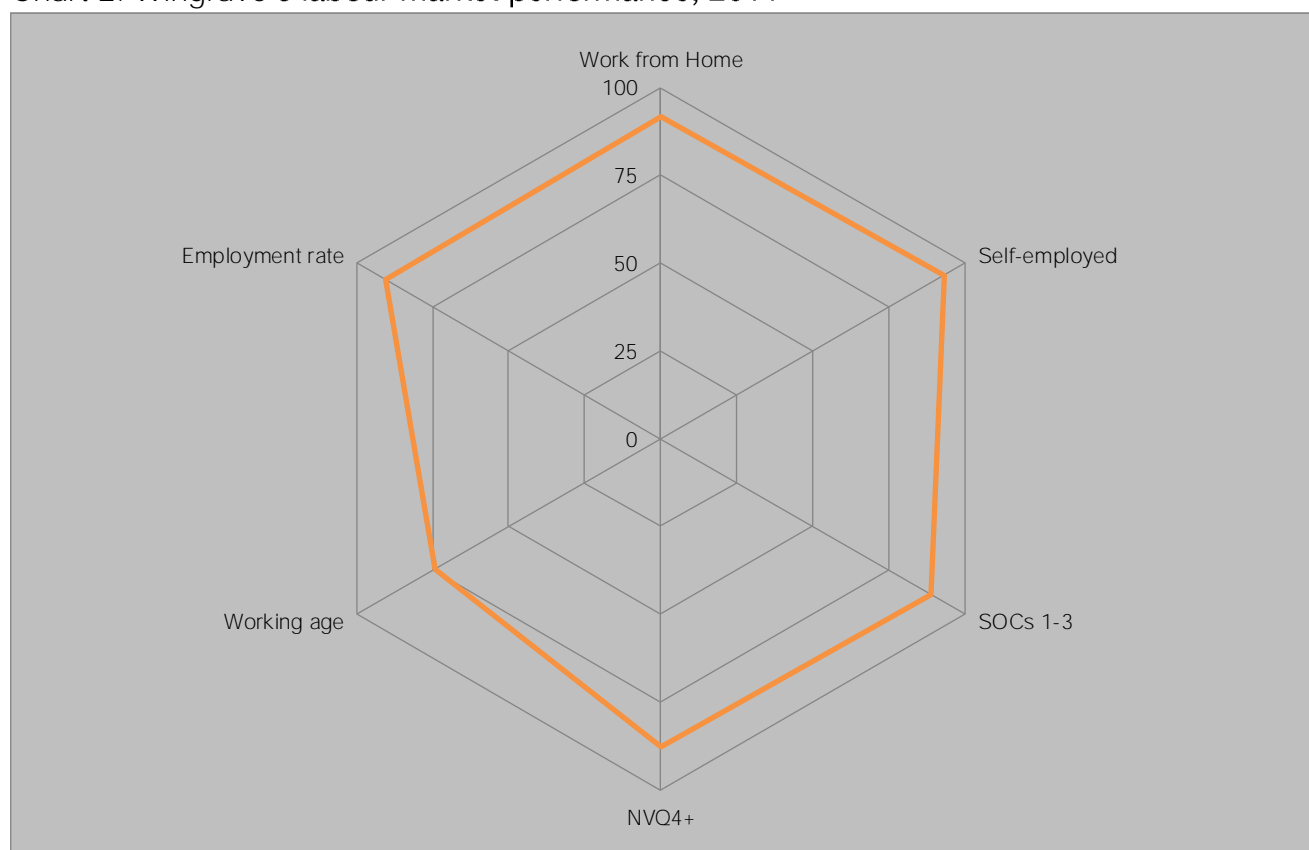
Table 2: Wingrave's labour market performance & nearest neighbours, 2011

Ward Name	Work from Home	Self-employed	SOCs 1-3	NVQ4+	Working age	Employment rate
Wingrave	9.0	18.6	55.0	39.3	65.4	70.4
Great Horwood	10.3	17.3	56.4	39.2	64.9	69.1
Cheddington	7.2	16.8	54.8	40.0	64.8	71.4
Great Brickhill	9.3	17.1	53.1	36.6	65.0	68.5
Marsh Gibbon	8.7	16.3	54.6	36.5	63.4	74.1
Pitstone	7.0	14.4	53.0	34.7	63.8	72.7

Source: Census, 2011

Wingrave has a high level of those who work from home and are self-employed. Furthermore, as stated previously, the ward has a high level of those educated to degree level or higher and those working in managerial, professional and technical roles. Wingrave looks to have a high employment rate and level of working age residents.

Chart 2: Wingrave's labour market performance, 2011

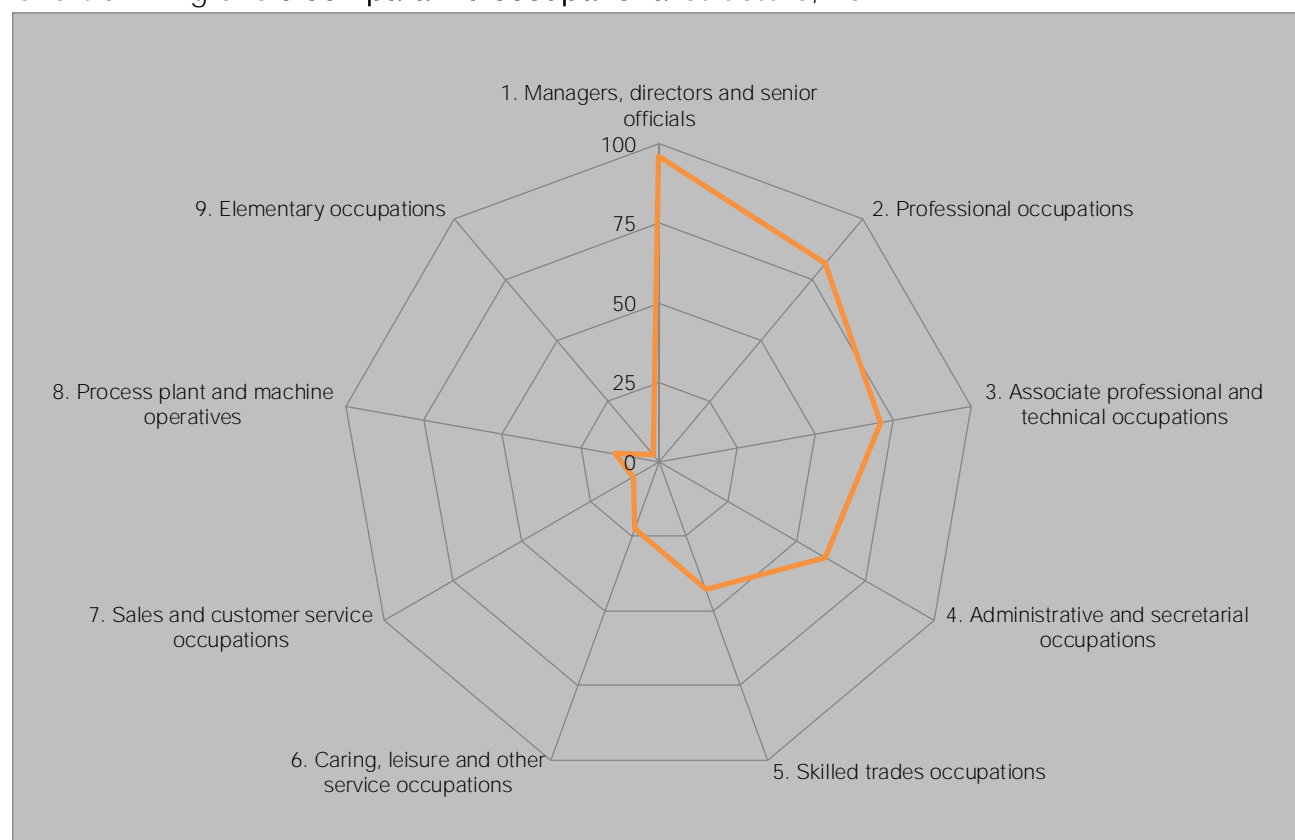


Source: Census, 2011

4.0 Occupational Structure

Wingrave's occupational structure is skewed towards the higher skilled and better remunerated occupations, with 55.0 per cent of working residents employed in managerial, professional and technical occupations, ranking in the top quartile nationally for both managerial and professional occupations. In contrast Wingrave ranks in the bottom quartile for other occupations, with only 3.9 and 4.9 per cent of working residents employed in process plant/ machinery operatives and elementary occupations respectively.

Chart 3: Wingrave's comparative occupational structure, 2011



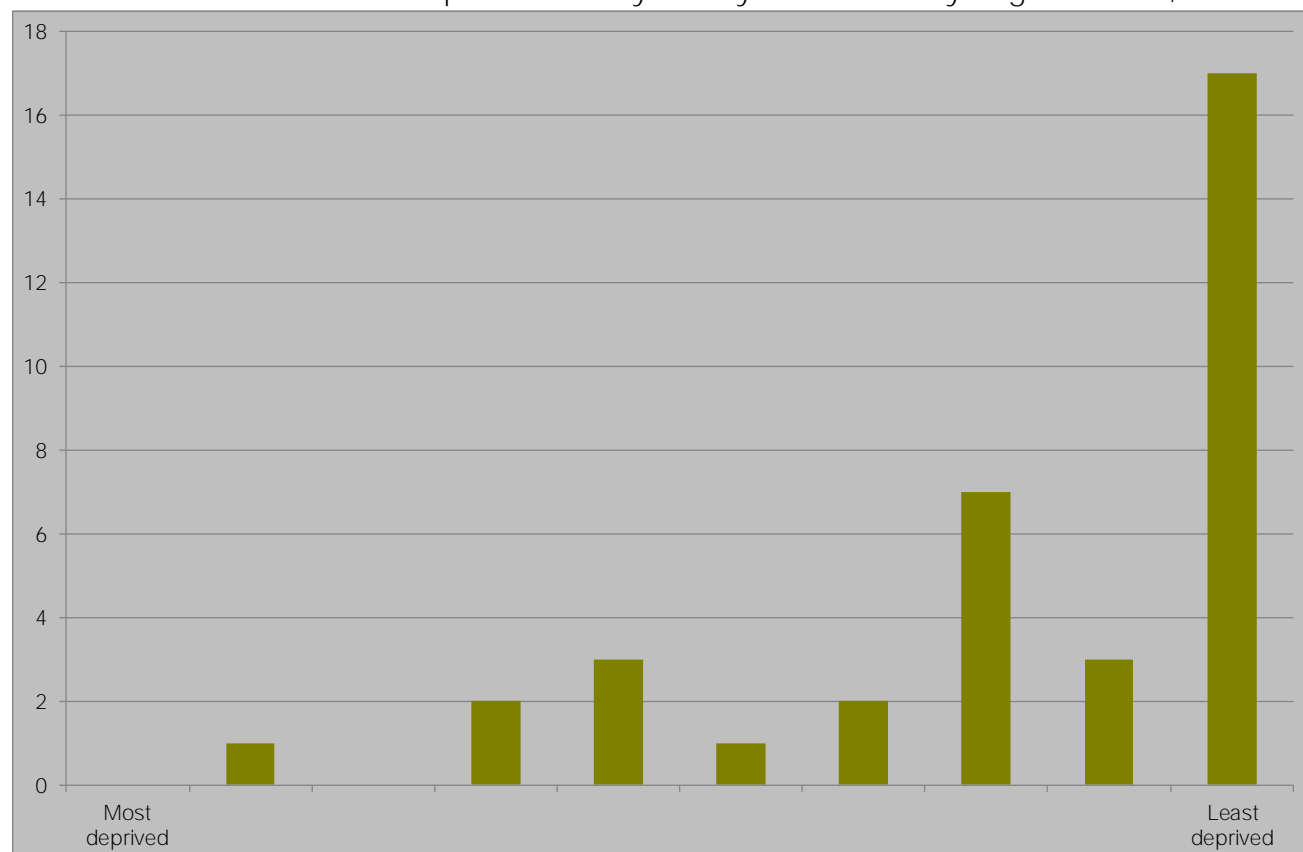
Source: Census, ONS, 2011

5.0 Deprivation

Buckinghamshire has the lowest level of economic deprivation of any Local Enterprise Partnership, with Aylesbury Vale having the 37th lowest economic deprivation of all 326 local authority districts in England, behind South Bucks (10th) and Chiltern (13th) but ahead of Wycombe (69th). Chart 4 demonstrates the concentration of Aylesbury Vale's wards among the least deprived in England with 17 of the 36 wards featuring among the least deprived 10 per cent of all wards in England and only six ranking among the most deprived half of English wards, a stark contrast to the London Borough of Newham where no ward ranks above halfway, highlighting the challenge Aylesbury Vale faces to attract resource tackle deprivation.

Wingrave has the 733rd lowest economic deprivation of the 7,707 wards in England and the 15th least economically deprived of the 36 Aylesbury Vale wards. Wingrave is the 43rd least economically deprived among the 108 ward in Buckinghamshire. The position of Aylesbury Vale's wards in England is shown in below, with Wingrave one of the 17 wards shown in England's least deprived decile.

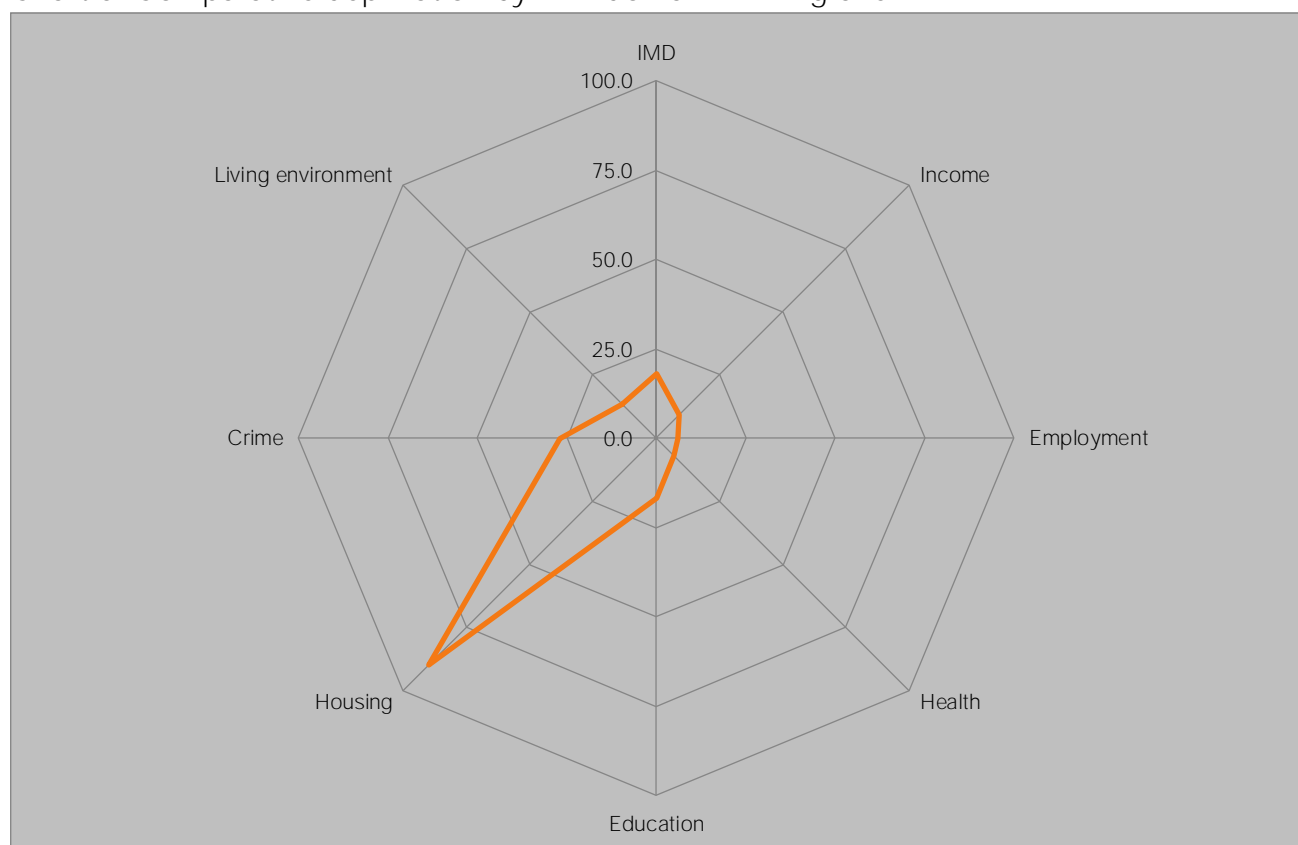
Chart 4: Relative economic deprivation of Aylesbury Vale wards by English decile, 2009



Source: DCLG, 2012

Wingrave ranks 6.542nd out of all wards in England based on the Index of Multiple Deprivationⁱⁱ; this makes it among the least deprived decile in England, above Aylesbury Vale's average rank of 6006th, demonstrating that the ward is less deprived than the district as a whole.

Chart 5: Comparative deprivation by IMD domain in Wingrave



Source: DCLG, 2010

The wards in Aylesbury Vale most closely matching Wingrave's deprivation profile are presented in Table 3. Nationally, the closest matches are The Bartons (West Oxfordshire), Peatling (Harborough) and Hatfield Villages (Welwyn Hatfield) while Cheddington and Brill are the most similar in Aylesbury Vale ranking as the 3rd and 34th most similar of all English wards. Of the 36 Aylesbury Vale wards 24 are among the 1,000 best matches including five in the top 100, however Southcourt is only the 6,163rd closest match.

Table 3: Deprivation Nearest Neighbours

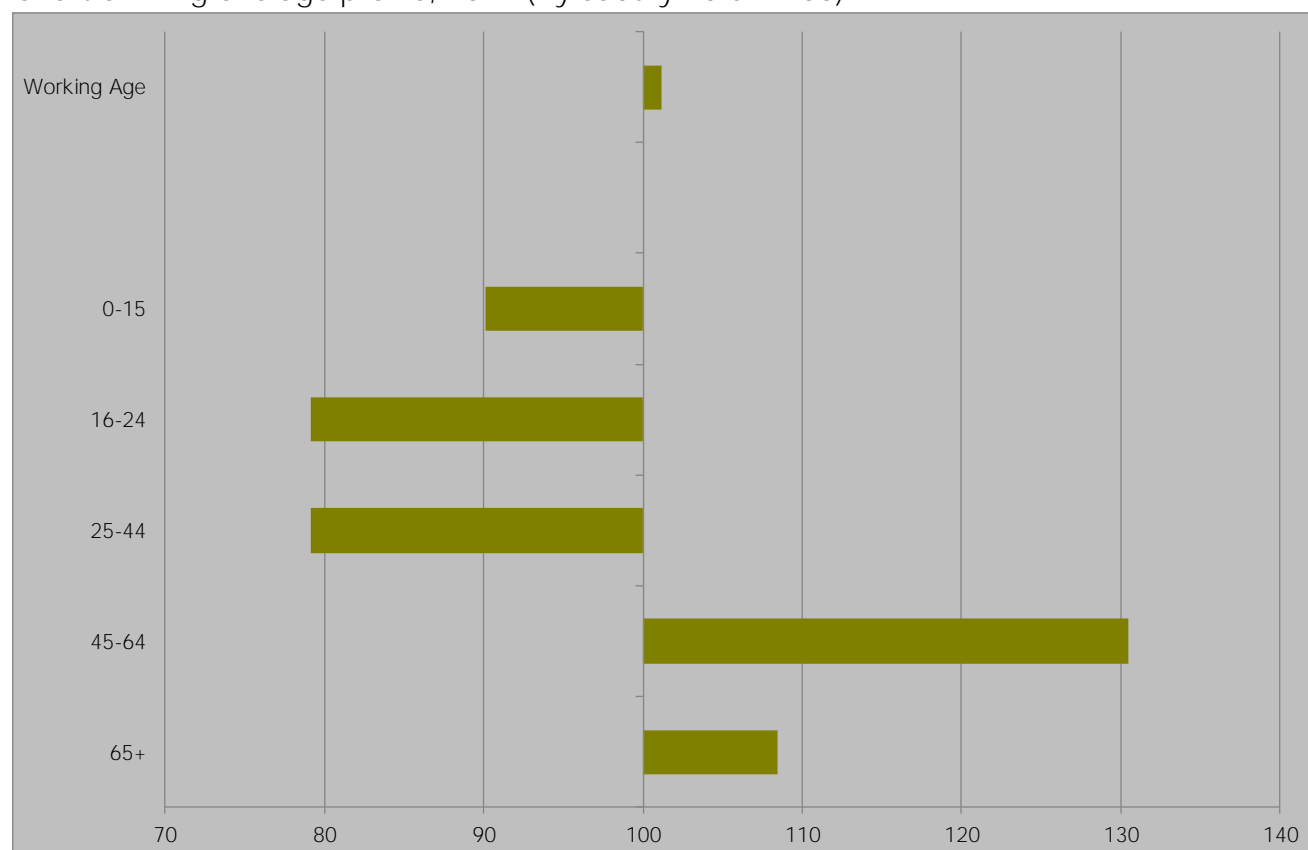
Ward	IMD	Income	Employment	Health	Education	Housing	Crime	Living environment
Wingrave	17.9	9.2	6.1	7.1	16.7	89.6	26.8	13.6
Cheddington	21.2	11.9	10.1	8.9	12.0	86.7	33.0	9.2
Brill	19.7	14.8	5.5	21.7	18.3	89.3	17.9	28.7
Great Brickhill	20.4	24.6	13.7	11.6	14.2	84.5	42.2	14.5
Aston Clinton	6.5	6.5	8.3	8.4	15.0	73.7	37.3	3.7
Bierton	8.1	5.3	4.0	21.4	15.3	79.0	40.9	6.5

Source: DCLG, 2010

6.0 Demography

At 42.4 years, Wingrave's **average age is well** above the 40.0 recorded across Aylesbury Vale as well as the county average of 41.0. This makes Wingrave one of the oldest wards in England as suggested by the high proportion of middle aged to elderly residents in Chart 6. In terms of age structure, two of the wards in Aylesbury Vale most similar to Wingrave are Wing and Brill with average ages of 42.3 and 42.4 respectively.

Chart 6: Wingrave age profile, 2011 (Aylesbury Vale = 100)



Source: Census, ONS, 2013

Wingrave has a higher proportion of working age residents than Aylesbury Vale at 65.4 per cent. This ranks Wingrave at 2,110th of all wards in England based on proportion of residents at working age. Wingrave has a fairly high proportion of those aged 0-15 at 18.4 per cent. This ranks Wingrave at 3,585th of all wards in England putting it among the central quintile of all ward in England for this age bracket.

Table 4: Aylesbury Vale's demography by ward

	0-15	16-64	65+
Aylesbury Vale	20.4	64.6	15.0
Aston Clinton	18.4	62.7	18.9
Aylesbury Central	16.2	71.5	12.3
Bedgrove	19.1	59.7	21.2
Bierton	16.3	59.8	23.9
Brill	18.3	61.8	19.9
Buckingham North	18.0	66.6	15.4
Buckingham South	20.8	66.4	12.8
Cheddington	20.0	64.8	15.2
Coldharbour	21.6	72.3	6.1
Edlesborough	19.2	62.8	18.1
Elmhurst and Watermead	22.0	66.6	11.4
Gatehouse	22.8	64.4	12.8
Great Brickhill	17.1	65.0	17.9
Great Horwood	20.6	64.9	14.5
Grendon Underwood	18.3	70.7	11.0
Haddenham	19.9	62.7	17.4
Long Crendon	19.1	61.0	19.9
Luffield Abbey	23.3	63.2	13.6
Mandeville and Elm Farm	19.4	68.6	12.0
Marsh Gibbon	23.6	63.4	13.0
Newton Longville	16.8	62.2	21.0
Oakfield	20.1	67.3	12.7
Pitstone	22.9	63.8	13.3
Quainton	20.9	61.7	17.4
Quarrendon	24.2	66.5	9.3
Southcourt	25.2	64.2	10.6
Steeple Claydon	18.8	66.8	14.4
Stewkley	20.6	60.7	18.7
Tingewick	20.4	62.1	17.5
Waddesdon	20.7	64.6	14.7
Walton Court and Hawkslade	23.9	69.2	6.9
Weedon	18.3	64.9	16.8
Wendover	21.8	58.8	19.4
Wing	18.3	64.0	17.6
Wingrave	18.4	65.4	16.2
Winslow	17.2	61.9	20.9

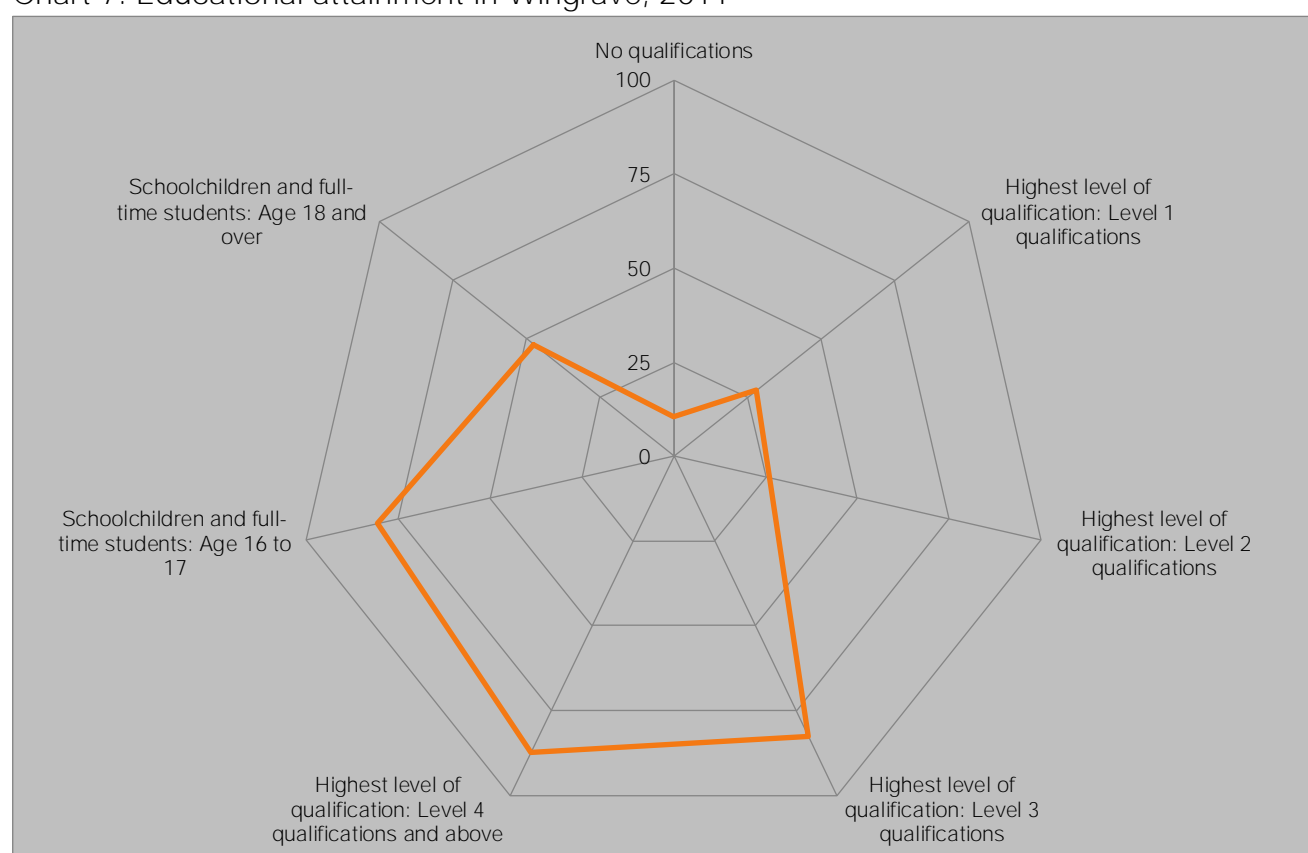
Source: Census, 2011

7.0 Educational attainment

Aylesbury Vale is one of the best qualified places in the country, with only 17.8 per cent of residents aged 16 and over holding no qualifications, well below the 22.5 per cent recorded across the country as a whole, while 32.0 per cent hold degree level qualifications, well above the national level of 27.4 per cent.

Wingrave's population has a higher educational attainment than the district's overall, with only 14.0 per cent having no qualifications and 39.3 per cent educated to degree level or higher. Only 3.2 per cent of Wingrave residents are schoolchildren or full-time students aged 16 to 17. This is significantly lower than other wards in Aylesbury Vale. The ward's performance compared to all wards in England is presented in Chart 7 below.

Chart 7: Educational attainment in Wingrave, 2011



Source, Census, 2011

Wingrave is most similar to Saxton & Ulleskelf (Selby), Astwell (South Northamptonshire) and Hartford & Greenbank (Cheshire West) of all English wards with regard to educational attainment. In the district the most similar wards are Great Brickhill, Stewkley and Berton, with 15 of the other 35 wards ranking inside the top 1000 matches but with Quarrendon and Southcourt both ranking outside the top 7,000.

Table 5: Educational attainment nearest neighbours, 2011

	No qualifications	Highest level of qualification: Level 1 qualifications	Highest level of qualification: Level 2 qualifications	Highest level of qualification: Level 3 qualifications	Highest level of qualification: Level 4 qualifications and above	Schoolchildren and full-time students: Age 16 to 17	Schoolchildren and full-time students: Age 18 and over
Wingrave	14.0	11.9	15.0	13.2	39.3	3.2	2.7
Great Brickhill	17.5	11.7	15.8	12.5	36.6	3.0	2.5
Stewkley	16.5	11.0	15.8	11.9	38.0	3.2	2.6
Bierton	19.1	11.9	15.9	12.2	32.8	3.1	2.2
Waddesdon	19.2	12.2	16.6	12.8	31.2	3.4	2.6
Quinton	14.7	10.6	16.4	12.5	38.9	3.7	2.0

Source: Census, ONS, 2011

7.1 Wingrave **Schools' OFSTED reports**

Buckinghamshire has the strongest schools performance any LEPⁱⁱⁱ, with over a quarter of school leavers' going on to a Russell Group university, including 3.7 per cent to Oxbridge, and 88.0 per cent of young people in the county achieving at least NVQ level 2 by 19. Wingrave's schools make a full contribution to that performance as demonstrated by their most recent OFSTED reports, which are summarised below.

7.1.1 Wingrave Church of England Combined School (Key Stage 2)

In 2012, 100 per cent of pupils attained Level 4 or higher in the Key Stage 2 English test and assessment. The result placed the school in the highest quintile of all schools. Of these, 93 per cent attained Level 4 or higher in reading and 100 per cent attained Level 4 or higher in writing. The results placed the school in the top 40 per cent and top 20 per cent respectively. In the same year, 93 per cent of pupils attained Level 4 or above in the Key Stage 2 mathematics test, this is an increase of five percentage points on the previous year placing the school in the top 20 per cent.

In 2012, 86 per cent of pupils attained expected progress in English placing the school in the bottom 40 per cent of all schools. In the same year, 86 per cent of pupils attained expected progress in mathematics, a decrease in two percentage points on the previous year also placing the school in the bottom 40 per cent of all schools. In this year the attendance rate for the school was 96.1 per cent. This is an increase of 0.4 percentage points on the previous year placing the school in the top 40 per cent of all schools.

8.0 Buckinghamshire Business First in Wingrave

Of the 150 businesses in Wingrave, 28, or 18.7 per cent are Buckinghamshire Business First members. BBF members in the ward are presented in Table 6 below.

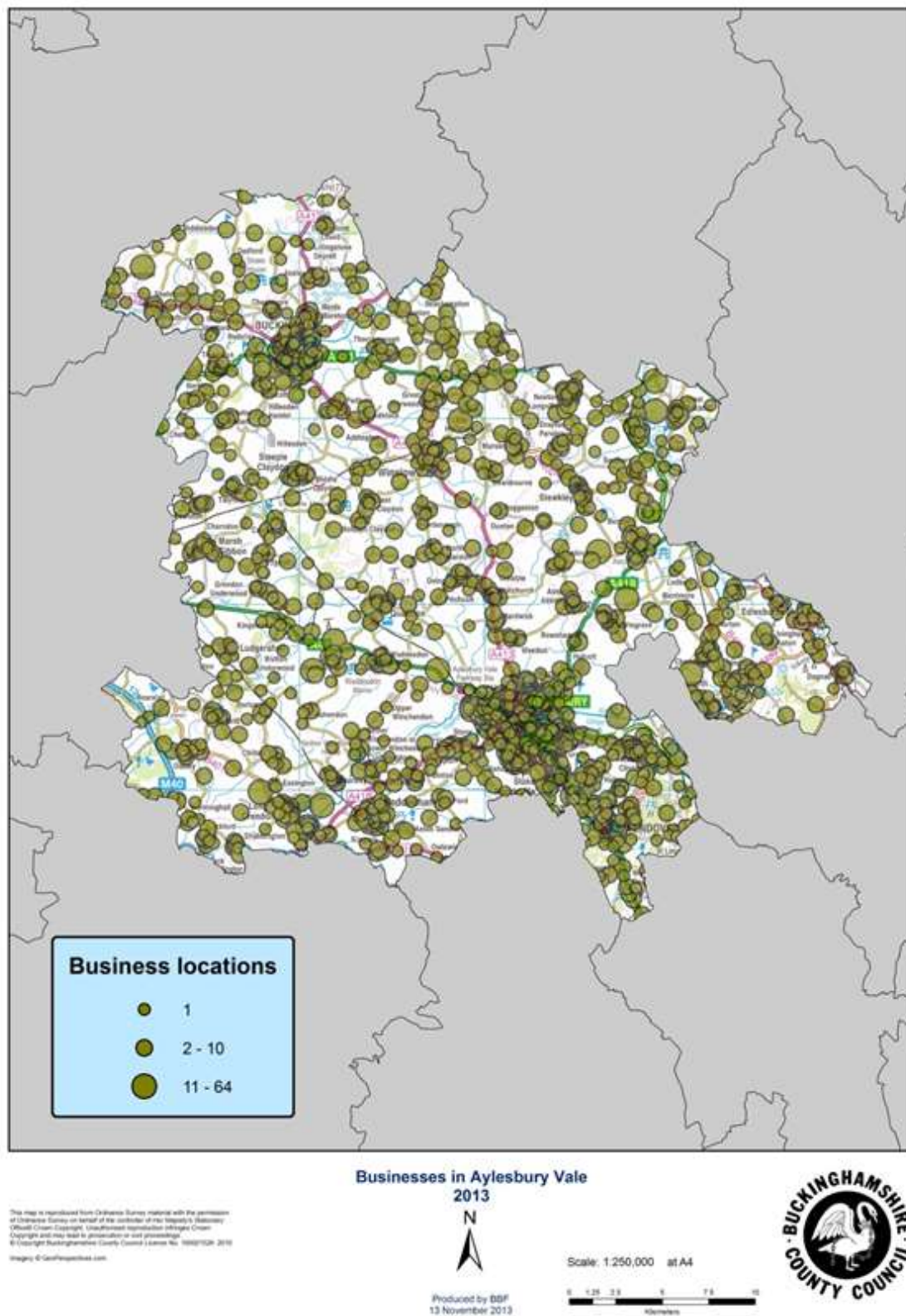
Table 6: BBF members in Wingrave, November 2013

Business	Employee Size Band
Svantek UK Ltd	
Gray Russ	11 to 25
Taylor Roberts Ltd	11 to 25
4CM	6 to 10
Ascot Homes	6 to 10
CBI Ltd	6 to 10
Clarkson, Cleaver & Bowes Limited	6 to 10
Evolution Live	6 to 10
Glass Designs	6 to 10
Acsoft Ltd	1 to 5
Aroc Developments	1 to 5
Bucks County Show	1 to 5
Cobb GB Ltd	1 to 5
Fresh Hair & Beauty	1 to 5
Gary Cope	1 to 5
Gobbler Boats Oil Recovery Ltd	1 to 5
Humphrey & Co	1 to 5
Inspired By You	1 to 5
John Masters Garden Sheds	1 to 5
Office Innovation	1 to 5
Office Innovation Online Ltd	1 to 5
Pritchards Accountants Ltd	1 to 5
Rose Cottage Kennels	1 to 5
Siscon Ltd	1 to 5
SRG & Associates Ltd	1 to 5
James Henderson	Self only
PB Financial SolutionsLtd.	Self only
Yvette Lamidey	Self only

BBF managed the consultants' report that estimated HS2's cost to Buckinghamshire at £44m per annum during construction and will continue to lead on socio-economic work for Buckinghamshire as mitigation work progresses, having drafted the relevant section in the Buckinghamshire Blueprint document.

9.0 Businesses in Aylesbury Vale

The distribution of businesses in Aylesbury Vale is shown in the map below. With 150 businesses, Wingrave has 1.9 per cent of the district's total, providing work for 1.1 per cent of the district's workforce.



ⁱ Travel to work data from the 2011 Census are expected to be released in 2014.

ⁱⁱ See <https://www.gov.uk/government/publications/english-indices-of-deprivation-2010>

ⁱⁱⁱ See for example BBF's analysis of school leavers' destinations and educational attainment aged 19: <http://www.bbf.uk.com/download/226> and <http://www.bbf.uk.com/download/228>