

## Aylesbury Vale Councillor Update Economic Profile of Quarrendon Ward



April 2014



**VALE BUSINESS FLOOR SPACE  
GREW BY 43,000m<sup>2</sup>  
FROM 2008-2012**



**VERY SMALL COMPANIES  
IN VALE 76% EMPLOYING  
FEWER THAN 5 PEOPLE**



**10% OF  
VALE WORKERS  
ARE HOME BASED**

## 1.0 Introduction

Quarrendon is home to 5,478 people and provides 6,100 jobs in 363 businesses. Of these businesses, 89 (24.5 per cent) are Buckinghamshire Business First members.

There were 2,616 employed people aged 16-74 living in Quarrendon ward at the 2011 Census, 124 less than the 2,740 recorded in 2001. Over that period the working age population fell 113 to 3,643 while the total population fell 411 to 5,478. The number of households fell by 58 (2.8 per cent) to 2,044. The ward was among 10 others that saw a fall in household numbers over the ten year period. The ward saw the third biggest decrease in households of all wards in the district and the fourth biggest decrease in the county.

The largest companies in Quarrendon include:

- Arla Foods – Aylesbury Dairy;
- Rasindeck Ltd;
- Sterling Thermal Technology Ltd;
- Hozelock Group Ltd;
- ATG Training Ltd;
- G F Lift Hydraulics Ltd; and
- NPA Insurance Broking Group.

There are 118 **Job Seekers' Allowance claimants living in** Quarrendon, representing 3.2 per cent of working age residents, including 35 claimants aged 18-24 and 20 who have been claiming for more than twelve months.

Superfast broadband is expected to be available to 90 per cent of premises in the Quarrendon ward by March 2016 with commercial providers responsible for 79 per cent. The Connected Counties project, run by BBF, deliver the remaining 11 per cent through its interventions in Quarrendon, Aylesbury, Cholesbury, Stoke Mandeville, Tring and Wendover exchange areas. BBF is seeking to deliver an extended superfast footprint via additional funding, adaptation of downstream technology and contract claw-back mechanism.

At the time of the 2001 Census<sup>1</sup>, of the 2,859 employed residents, 818 people lived and worked in the ward, with the most common destinations by local authority district being:

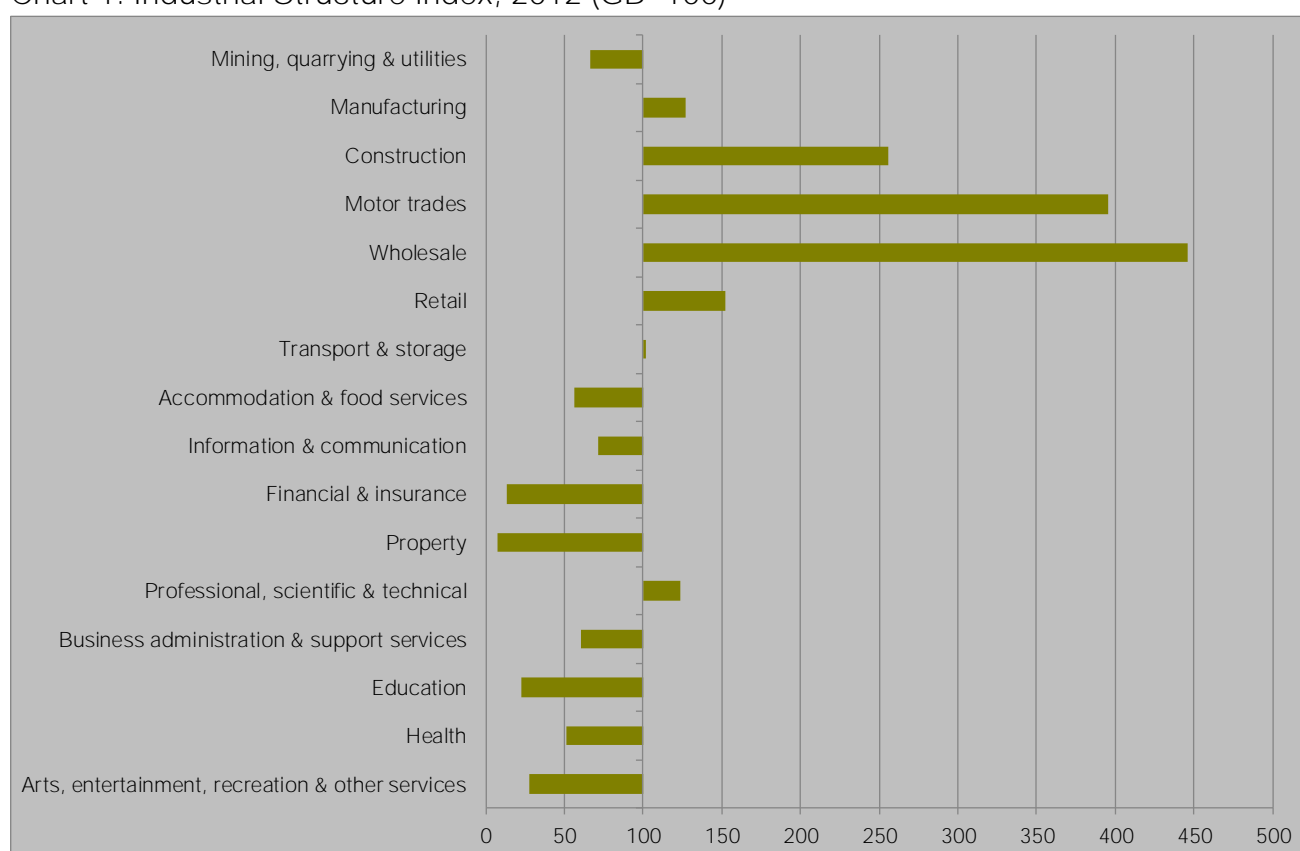
- Aylesbury Vale (2,104, 73.6 per cent)
- Wycombe (151, 5.3)
- Dacorum (79, 2.8)
- Chiltern (74, 2.6)
- South Oxfordshire (59, 2.1)
- Hillingdon (54, 2.7)
- Central Bedfordshire (40, 1.4)
- Milton Keynes (37, 1.3)

## 2.0 Industrial structure

There are 363 businesses located in Quarrendon employing 6,100 people. Of these businesses, 221 are micro businesses, employing fewer than 10 people.

Quarrendon is over-represented in Construction, Motor-trades and Wholesale. The sector showing the most significantly higher proportion of employment than the country average is Wholesale which provides 17.8 per cent of employment. This ranks the ward 204<sup>th</sup> out of all wards in the country. In addition, Motor trades make up 7.1 per cent of employment which ranks the ward 439<sup>th</sup> out of all wards in the country. The ward is also over-represented in Manufacturing and Retail. The sectors which are under-represented are Mining, Quarrying & Utilities, Financial & Insurance and Property.

Chart 1: Industrial Structure Index, 2012 (GB=100)



Source: BRES, ONS, 2013

Other under-represented sectors include Education, Health and Arts, entertainment, recreation & other services. Education makes up only 2.0 per cent of employment which ranks the ward 7794<sup>th</sup> out of all wards in the country.

## 2.1 The Industrial Strategy and the Plan for Growth

The Government's economic objective is to secure sustainable economic growth. The Plan for Growth and the Industrial Strategy set out policies to realise this objective and to rebalance the economy, which include focusing on sectors expected to deliver strong growth. Aylesbury Vale's economy is well-represented in these sectors, particularly aerospace, the information economy and professional and business services.

While Quarrendon provides jobs in these sectors, the industrial strategy sector where the ward delivers the highest share of national employment is construction, which accounts for 11.7 per cent of employment, ranking Quarrendon at 1123<sup>rd</sup> among English wards. The proportion of jobs in Quarrendon in Industrial Strategy sectors are presented in Table 1.

Table 1: Employment in selected industrial strategy sectors, 2012

	Education	Professional and Business Services	Construction	Information Economy
Aylesbury Vale	10.1	16.3	5.4	2.7
Buckinghamshire	9.3	15.0	5.5	4.4
England	4.6	12.9	4.6	3.0
Quarrendon	2.0	13.6	11.7	2.1

Source: BRES, ONS, 2013

At 2.0 per cent, the proportion of Quarrendon's jobs in the education sector is the 7,750<sup>th</sup> highest of all wards in England, the proportion is below that of the country, county and the district level.

## 3.0 Labour market

At 66.7 per cent of 16-74 year olds, Quarrendon's employment rate is among the highest in the country. Quarrendon has a proportion of only 16.6 per cent of its residents qualified to degree level or higher. Furthermore, just 27.8 per cent work in managerial, professional or technical occupations.

In Aylesbury Vale the wards most similar to Quarrendon are Gatehouse, Southcourt and Walton Court & Hawkslade however, these are the only three wards amongst the remaining 35 to rank in the top 1000 closest matches. The least similar ward in the district is Long Crendon, one of three wards in Aylesbury to rank lower than the 8,000<sup>th</sup> closest match along with Stewkley and Quainton.

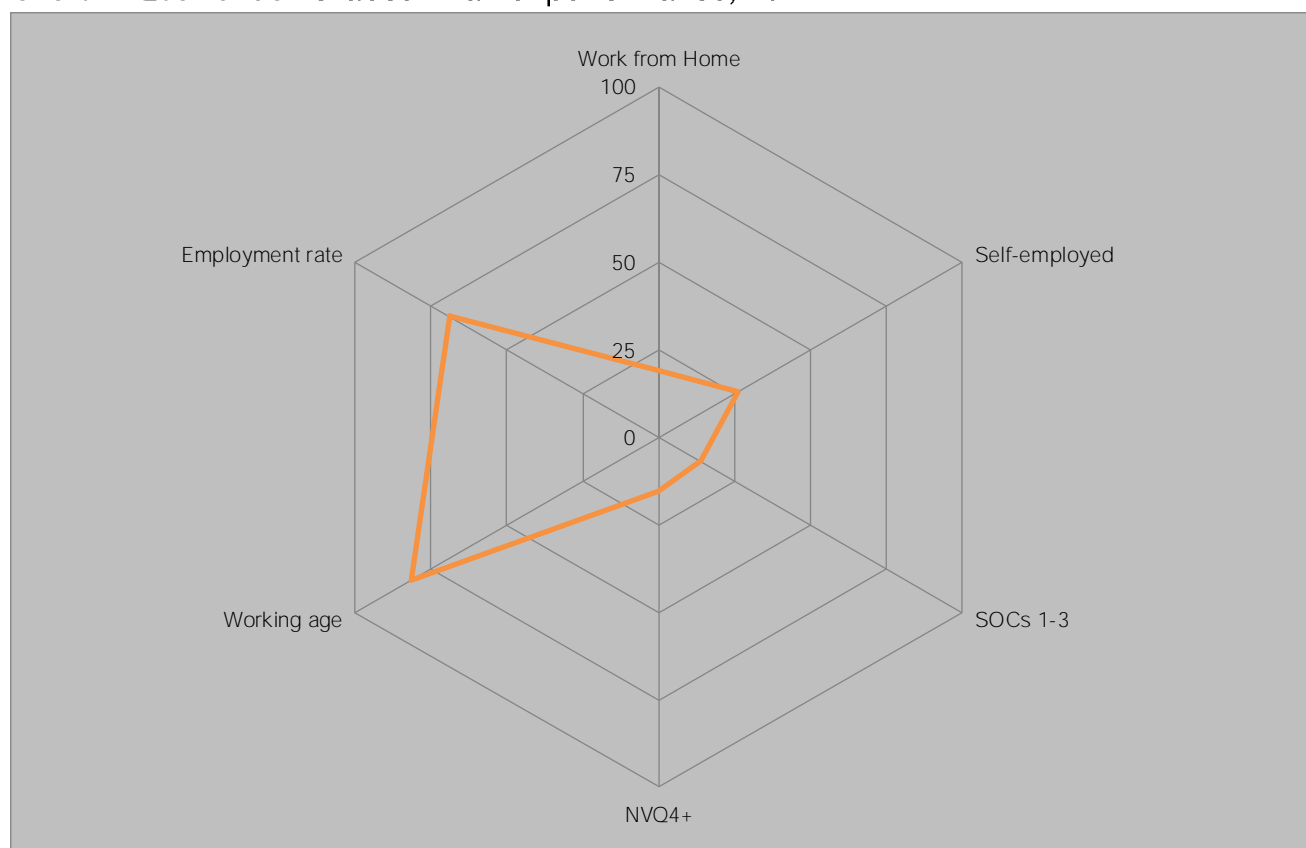
Table 2: Quarrendon's labour market performance &amp; nearest neighbours, 2011

Ward Name	Work from Home	Self-employed	SOCs 1-3	NVQ4+	Working age	Employment rate
Quarrendon	1.9	7.7	27.8	16.6	66.5	66.7
Gatehouse	1.8	7.8	30.2	18.7	64.4	67.2
Southcourt	1.6	8.2	27.0	15.8	64.2	63.7
Walton Court and Hawkslade	2.4	8.0	33.7	21.0	69.2	72.7
Elmhurst and Watermead	2.8	9.1	39.6	25.2	66.6	68.8
Oakfield	2.7	9.0	40.7	25.4	67.3	68.1

Source: Census, 2011

Quarrendon has a low level of those who work from home and are self-employed. Furthermore, as stated previously, the ward has a low level of those educated to degree level or higher and those working in managerial, professional and technical roles. Quarrendon looks to have an average employment rate and level of working age residents.

Chart 2: Quarrendon's labour market performance, 2011

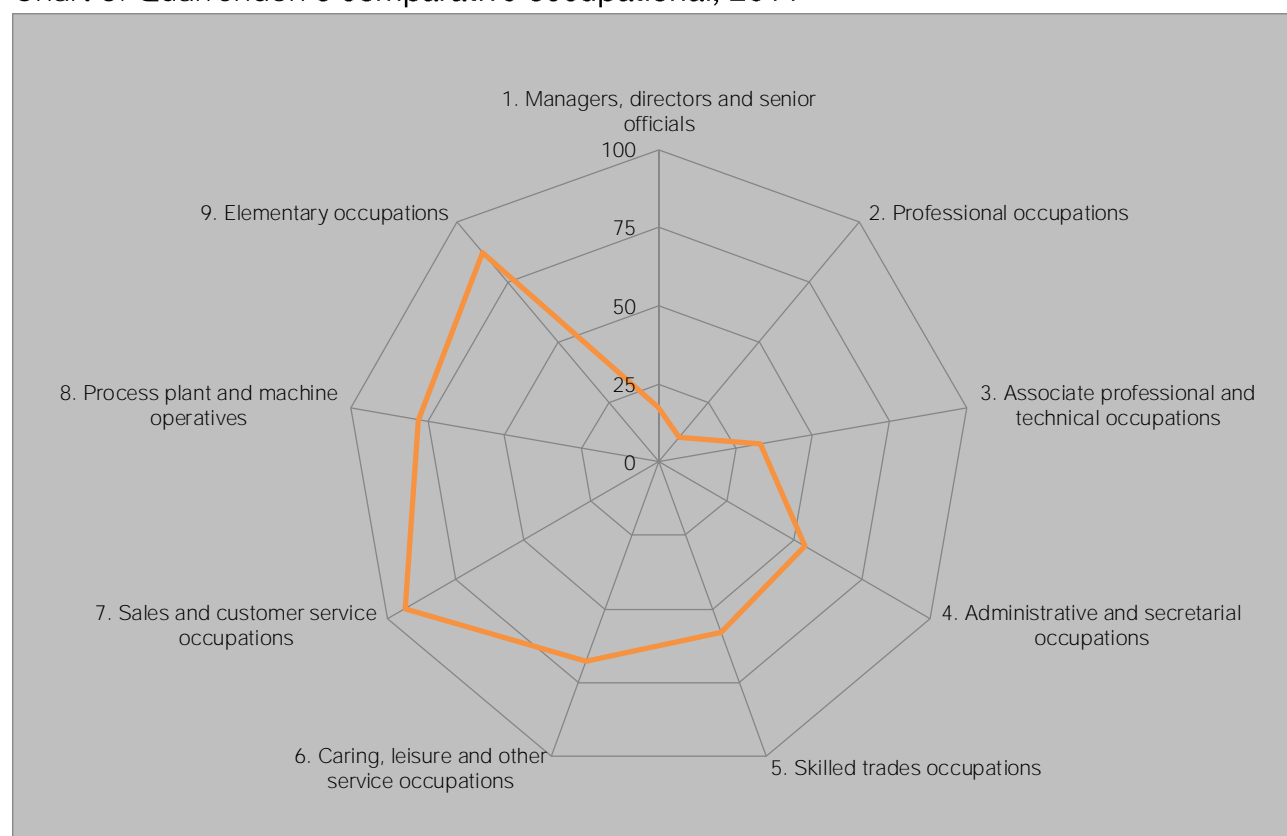


Source: Census, 2011

## 4.0 Occupational Structure

Quarrendon's occupational structure is skewed towards the lower skilled and lower paid occupations, with only 27.8 per cent of working residents employed in managerial, professional and technical occupations, ranking in the bottom quartile nationally for both managerial and professional occupations. In contrast Quarrendon ranks in the top quartile for a number of other occupations, with 11.8 and 15.9 per cent of working residents employed in sales/customer service and elementary jobs respectively. Quarrendon can also be found in the top quartile for employment in process plant and machinery operatives which accounts for 9.6 per cent of employment in the ward.

Chart 3: Quarrendon's comparative occupational, 2011



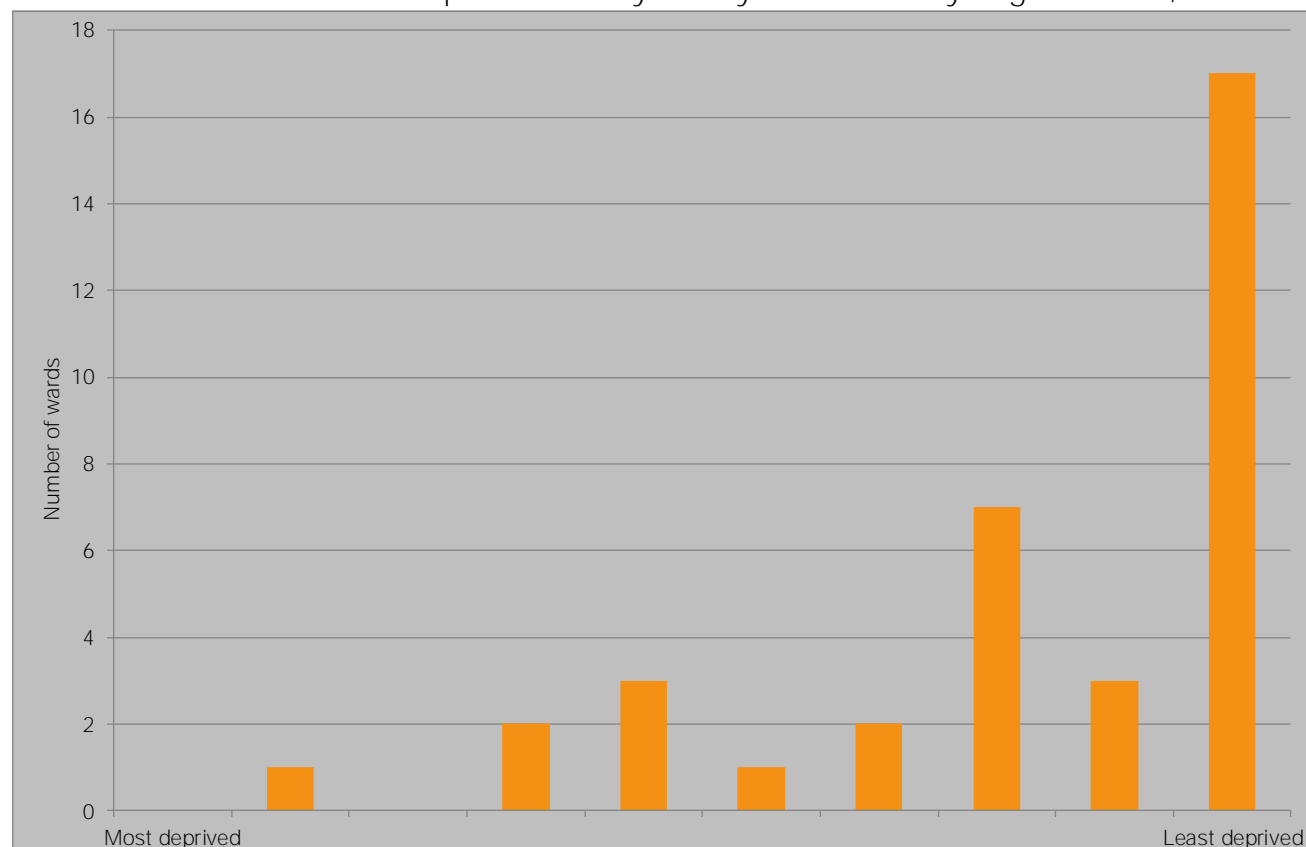
Source: Census, ONS, 2011

## 5.0 Deprivation

Buckinghamshire has the lowest level of economic deprivation of any Local Enterprise Partnership, with Aylesbury Vale having the 37th lowest economic deprivation of all 326 local authority districts in England, behind South Bucks (10th) and Chiltern (13th) but ahead of Wycombe (69th). Chart 4 demonstrates the concentration of Aylesbury Vale's wards among the least deprived in England with 17 of the 36 wards featuring among the least deprived 10 per cent of all wards in England and only six ranking among the most deprived half of English wards, a stark contrast to the London Borough of Newham where no ward ranks above halfway, highlighting the challenge Aylesbury Vale faces to attract resource tackle deprivation.

Quarrendon has the 5,162<sup>nd</sup> lowest economic deprivation of the 7,707 wards in England and is the 3<sup>rd</sup> most economically deprived of the 36 Aylesbury Vale wards. Quarrendon is the 9<sup>th</sup> most economically deprived among the 108 ward in Buckinghamshire. The position of Aylesbury Vale's wards in England is shown in below, with Quarrendon one of the 17 wards shown in England's least deprived decile.

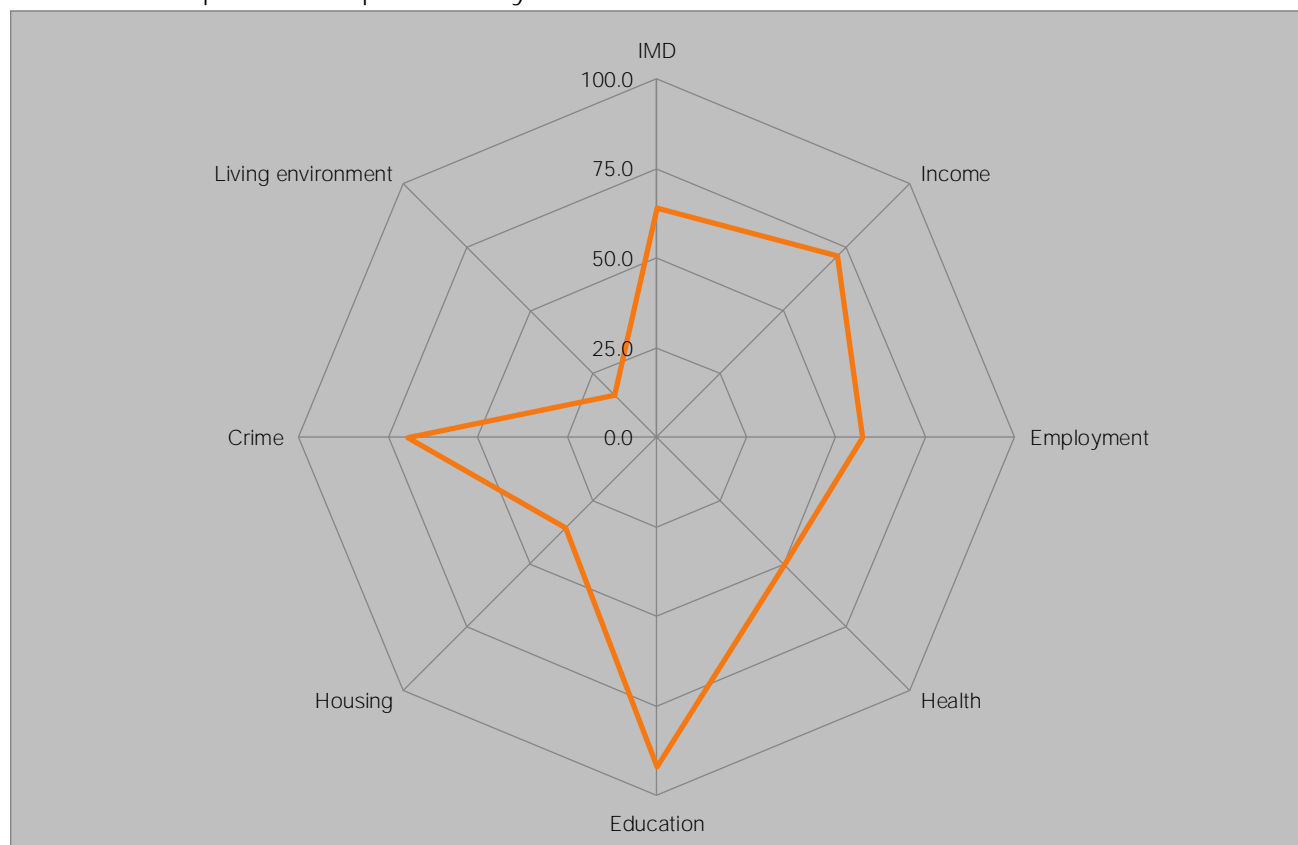
Chart 4: Relative economic deprivation of Aylesbury Vale wards by English decile, 2009



Source: DCLG, 2012

Quarrendon ranks 2,694<sup>th</sup> out of all wards in England based on the Index of Multiple Deprivation<sup>ii</sup>; this makes it among the fourth most deprived decile in England, well above Aylesbury Vale's **average rank of 6006<sup>th</sup>**, demonstrating that the ward is much more deprived than the district as a whole.

Chart 5: Comparative deprivation by IMD domain in Quarrendon



Source: DCLG, 2010

The wards in Aylesbury Vale most closely matching Quarrendon's deprivation profile are presented in Table 3. Nationally, the closest matches are Loughborough Shelthorpe in Charnwood and Southdown in Bath while Walton Court & Hawkslade and Elmhurst & Watermead are the most similar in Aylesbury Vale ranking as the 77<sup>th</sup> and 251<sup>st</sup> most similar of all English wards. Of the 36 Aylesbury Vale wards four are among the 1,000 best matches (all of which are within 300 closest matches). However, outside of this, the next nearest match is Oakfield at 1581<sup>st</sup>. Quarrendon has 12 wards outside the 7000 closest matches with Stewkley as the least similar ward at 7774<sup>th</sup>.

Table 3: Deprivation Nearest Neighbours

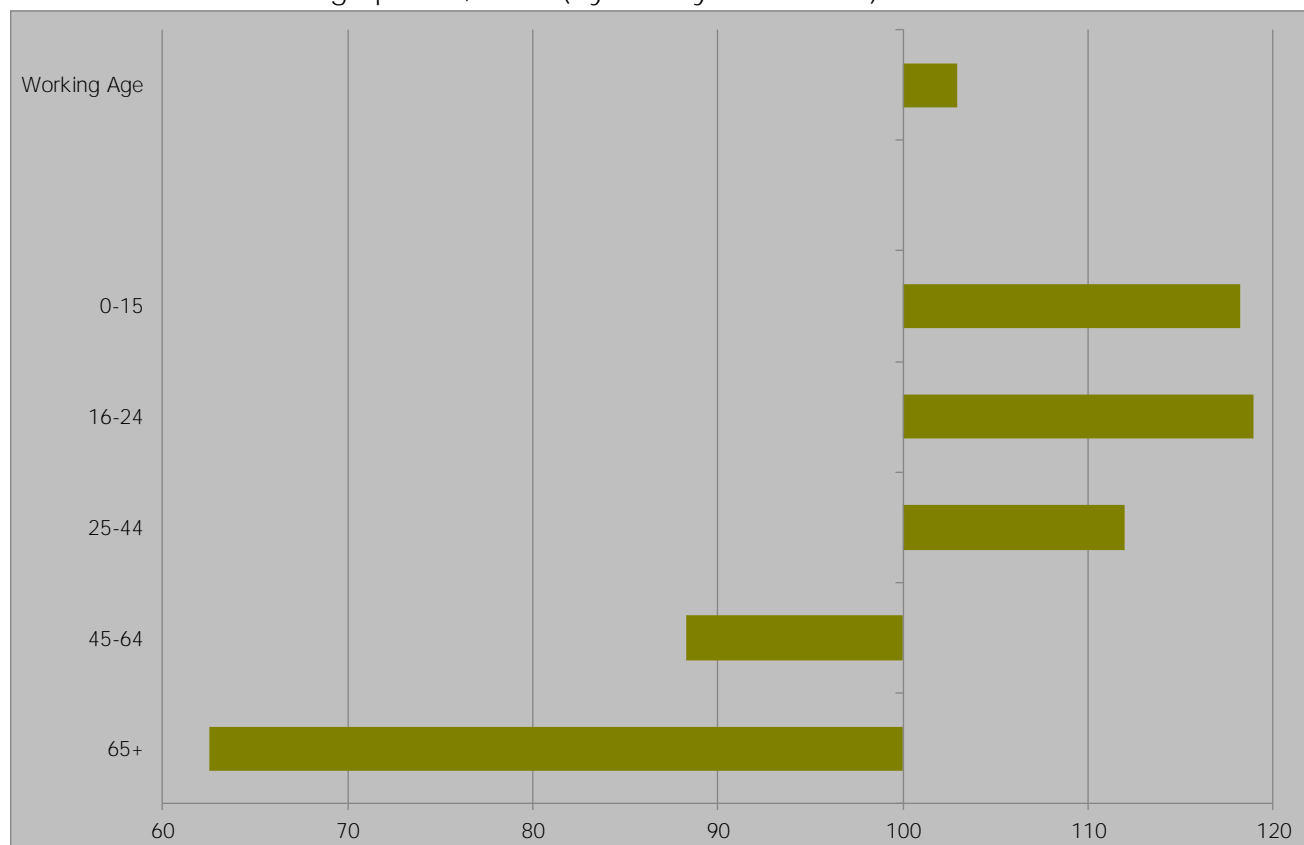
Ward	IMD	Income	Employment	Health	Education	Housing	Crime	Living environment
Quarrendon	64.1	71.4	57.4	50.3	91.8	36.0	69.3	16.5
Walton Court and Hawkslade	55.3	57.6	51.4	53.6	78.7	64.5	68.0	5.3
Elmhurst and Watermead	57.7	62.5	49.4	56.7	65.0	52.7	63.5	35.4
Gatehouse	72.9	77.1	59.7	71.0	90.5	39.8	83.9	45.6
Southcourt	80.4	87.3	76.6	73.7	95.0	39.0	82.5	29.7
Oakfield	30.4	32.6	35.8	30.5	59.2	29.7	57.9	27.3

Source: DCLG, 2010

## 6.0 Demography

At 34.5 years, Quarrendon's **average age is well** below the 40.0 recorded across Aylesbury Vale as well as the county average of 41.0. This makes Quarrendon one of the youngest wards in England as suggested in Chart 6. In terms of age structure, two of the wards in Aylesbury Vale most similar to Quarrendon are Walton Court & Hawkslade and Southcourt, both with average ages of 33.9.

Chart 6: Quarrendon age profile, 2011 (Aylesbury Vale = 100)



Source: Census, ONS, 2013

Quarrendon has a higher proportion of working age residents than Aylesbury Vale at only 66.5 per cent. This ranks Quarrendon at 1,521<sup>st</sup> of all wards in England based on proportion of residents at working age. Quarrendon has a significantly high proportion of those aged 0 - 15 at 24.2 per cent. This ranks Quarrendon at 362<sup>nd</sup> of all wards in England putting it among the central quintile of all ward in England for this age bracket.

Table 4: Aylesbury Vale's demography by ward

	0-15	16-64	65+
Aylesbury Vale	20.4	64.6	15.0
Aston Clinton	18.4	62.7	18.9
Aylesbury Central	16.2	71.5	12.3
Bedgrove	19.1	59.7	21.2
Bierton	16.3	59.8	23.9
Brill	18.3	61.8	19.9
Buckingham North	18.0	66.6	15.4
Buckingham South	20.8	66.4	12.8
Cheddington	20.0	64.8	15.2
Coldharbour	21.6	72.3	6.1
Edlesborough	19.2	62.8	18.1
Elmhurst and Watermead	22.0	66.6	11.4
Gatehouse	22.8	64.4	12.8
Great Brickhill	17.1	65.0	17.9
Great Horwood	20.6	64.9	14.5
Grendon Underwood	18.3	70.7	11.0
Haddenham	19.9	62.7	17.4
Long Crendon	19.1	61.0	19.9
Luffield Abbey	23.3	63.2	13.6
Mandeville and Elm Farm	19.4	68.6	12.0
Marsh Gibbon	23.6	63.4	13.0
Newton Longville	16.8	62.2	21.0
Oakfield	20.1	67.3	12.7
Pitstone	22.9	63.8	13.3
Quainton	20.9	61.7	17.4
Quarrendon	24.2	66.5	9.3
Southcourt	25.2	64.2	10.6
Steeple Claydon	18.8	66.8	14.4
Stewkley	20.6	60.7	18.7
Tingewick	20.4	62.1	17.5
Waddesdon	20.7	64.6	14.7
Walton Court and Hawkslade	23.9	69.2	6.9
Weedon	18.3	64.9	16.8
Wendover	21.8	58.8	19.4
Wing	18.3	64.0	17.6
Wingrave	18.4	65.4	16.2
Winslow	17.2	61.9	20.9

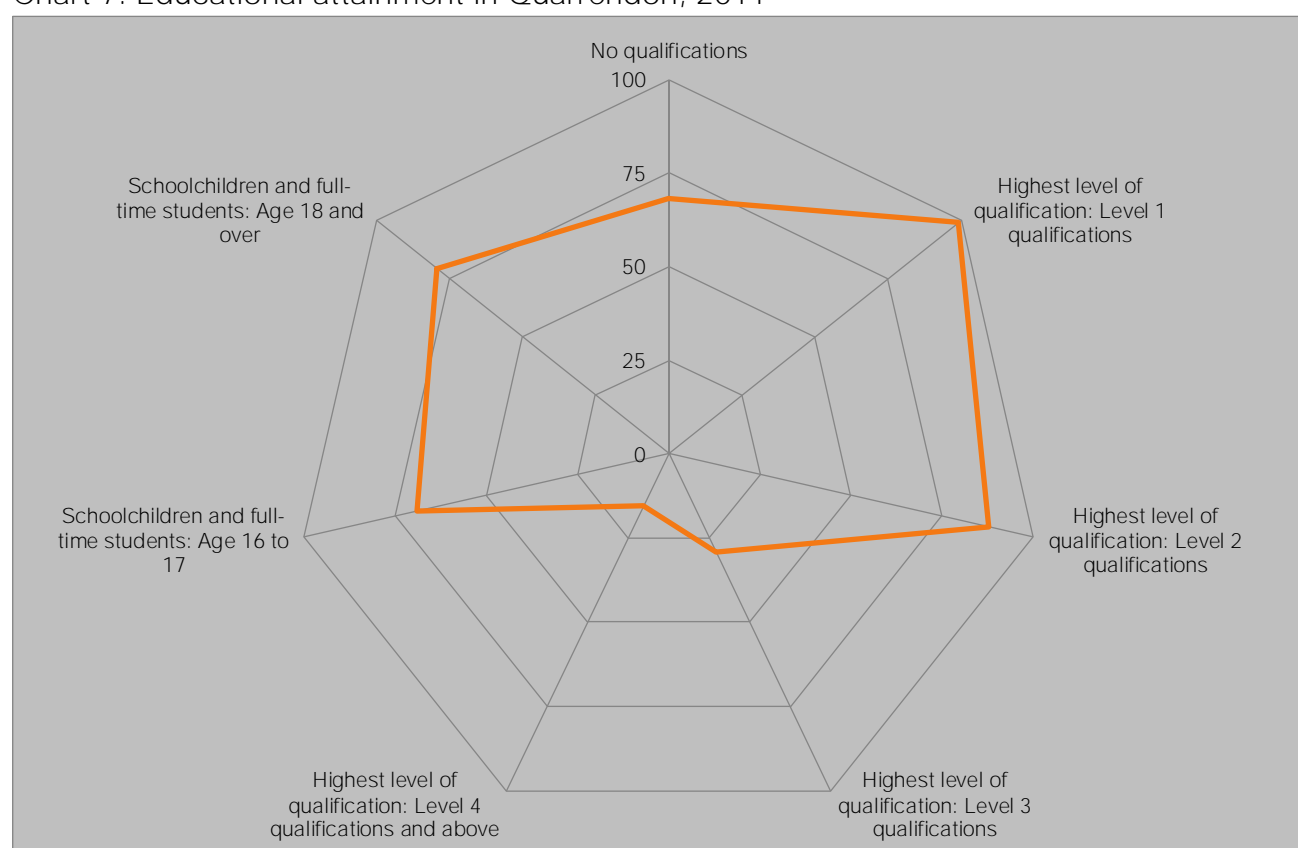
Source: Census, 2011

## 7.0 Educational attainment

Aylesbury Vale is one of the best qualified places in the country, with only 17.8 per cent of residents aged 16 and over holding no qualifications, well below the 22.5 per cent recorded across the country as a whole, while 32.0 per cent hold degree level qualifications, well above the national level of 27.4 per cent.

Quarrendon's population has a lower educational attainment than the district's overall, with 25.4 per cent having no qualifications and only 16.6 per cent educated to degree level or higher. Only 3.0 per cent of Quarrendon residents are schoolchildren or full-time students aged 16 to 17. This is significantly lower than other wards in Aylesbury Vale. The ward's performance compared to all wards in England is presented in Chart 7 below.

Chart 7: Educational attainment in Quarrendon, 2011



Source, Census, 2011

Quarrendon is most similar to Crayford (Bexley) and The Nedge (Telford & Wrekin) of all English wards with regard to educational attainment. In the district the most similar wards are Gatehouse, Southcourt and Elmhurst & Watermead, with only the former two ranking inside the top 1000 matches. There are four wards ranking outside the top 7000 closest matches, these include Haddenham and Long Crendon.

Table 5: Educational attainment nearest neighbours, 2011

	No qualifications	Highest level of qualification: Level 1 qualifications	Highest level of qualification: Level 2 qualifications	Highest level of qualification: Level 3 qualifications	Highest level of qualification: Level 4 qualifications and above	Schoolchildren and full-time students: Age 16 to 17	Schoolchildren and full-time students: Age 18 and over
Quarrendon	25.4	19.4	18.0	11.0	16.6	3.0	3.9
Gatehouse	25.6	17.7	16.2	11.0	18.7	2.8	3.1
Southcourt	30.4	18.0	15.5	10.1	15.8	3.5	3.6
Elmhurst and Watermead	21.8	15.6	15.8	11.4	25.2	2.8	3.3
Walton Court and Hawkslade	21.0	18.9	17.9	12.5	21.0	2.5	2.3
Oakfield	18.3	16.5	17.9	12.9	25.4	2.5	2.6

Source: Census, ONS, 2011

## 7.1 Quarrendon **Schools' OFSTED reports**

Buckinghamshire has the strongest schools performance any LEP<sup>iii</sup>, with over a quarter of school leavers' going on to a Russell Group university, including 3.7 per cent to Oxbridge, and 88.0 per cent of young people in the county achieving at least NVQ level 2 by 19. Quarrendon's schools make a full contribution to that performance as demonstrated by their most recent OFSTED reports, which are summarised below.

### 7.1.1 Thomas Hickman School (Key Stage 2)

In 2012, 85 per cent of pupils attained Level 4 or higher in the Key Stage 2 English test and assessment. The result put the school in the bottom 40 per cent of all schools. Within this, 74 per cent of pupils attained Level 4 or above in Key Stage 2 reading (a decrease of 7 percentage points on the previous year) and 83 per cent of pupils attained Level 4 or higher in Key Stage 2 writing. The results placed the school in the bottom and middle quintile of all schools respectively. The school was placed in the bottom 20 per cent of all schools based on only 70 per cent of pupils attaining Level 4 or above in the Key Stage 2 mathematics test. This is a decrease of five percentage points since 2011.

In the same year, 86 per cent of pupils achieved expected progress in English, this placed the school in the bottom 40 per cent of all schools for pupil progress. In mathematics, 80 per cent of pupils achieved their expected progress, an increase of 11 percentage points on the previous year. In 2012, the attendance rate at the school was 94.8 per cent. This was an increase of 0.5 percentage points however the attendance rate fell to the bottom 20 per cent of all schools.

## 8.0 Buckinghamshire Business First in Quarrendon

Of the 363 businesses in Quarrendon, 89, or 24.5 per cent are Buckinghamshire Business First members. BBF members in the ward are presented in Table 6 below.

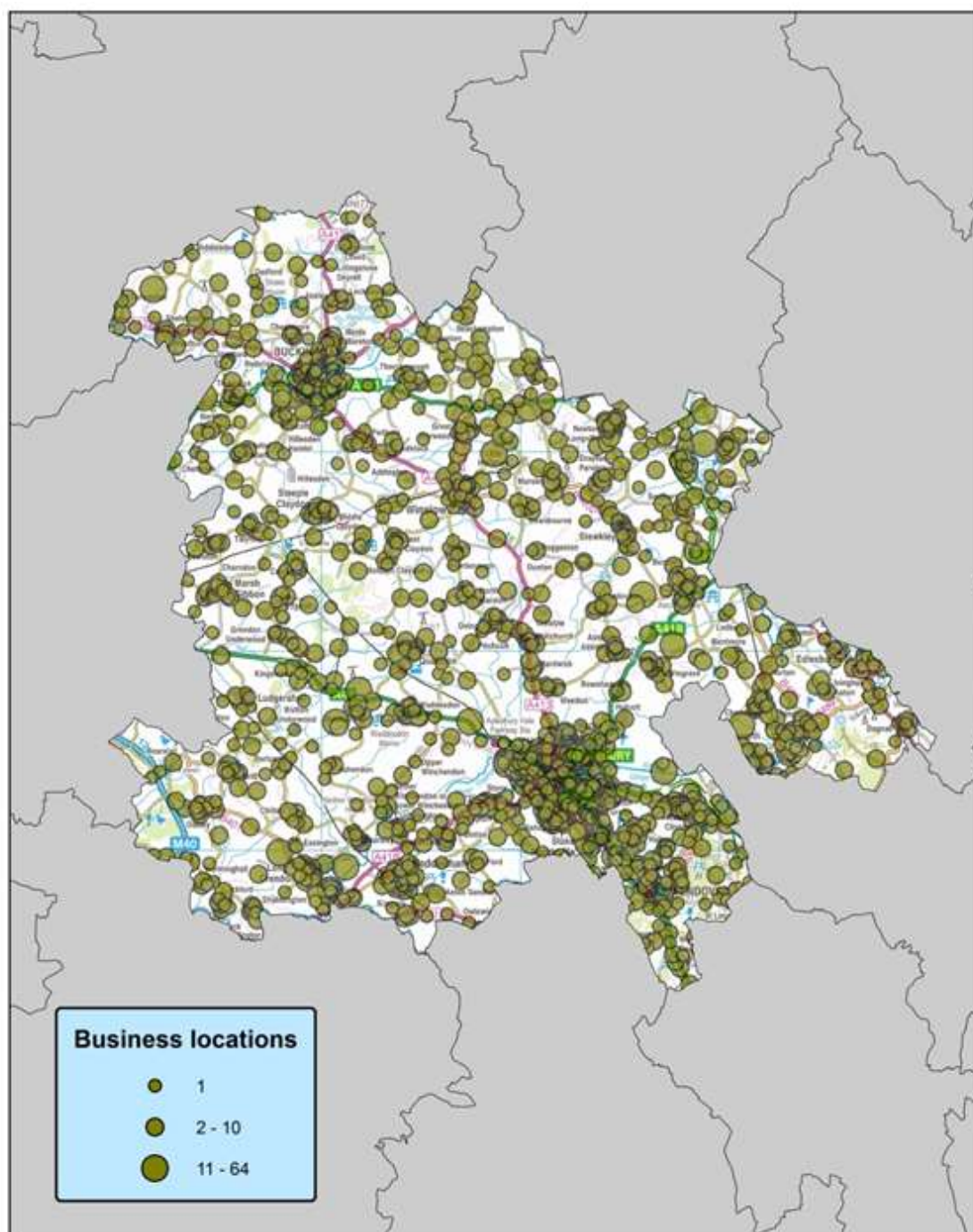
Table 6: BBF members in Quarrendon, November 2013

Business	Employee Size Band	Business	Employee Size Band
EMTO Limited		B G Autos	1 to 5
The Diabetic Boot Company		Bearing Traders Ltd	1 to 5
The Archive Centre Ltd	None	Benham & Williams	1 to 5
Arla Foods - Aylesbury Dairy	251 to 500	Bobbles & Beads	1 to 5
Sterling Thermal Technology Limited	101 to 250	Brooks Precision Engineering Ltd	1 to 5
ATG Training Ltd	51 to 100	Bucks Automotive Ltd	1 to 5
G F Lift Hydraulics Ltd	51 to 100	Chrysoma Associates Ltd	1 to 5
NPA Insurance Broking Group	51 to 100	Coldene Castors Ltd	1 to 5
Four Group	26 to 50	Comp Room Media Ltd	1 to 5
Hurst Morris Associates Ltd	26 to 50	Corporate & Commercial Ltd	1 to 5
Voicenet Solutions	26 to 50	Cuisine Excellence	1 to 5
Alcumus	11 to 25	D J W Repairs	1 to 5
Aylesbury Box Company	11 to 25	Diesel Injection Aylesbury Ltd	1 to 5
Aylesbury Secondary Metals Ltd	11 to 25	DS Automotives	1 to 5
Enercon Industries Ltd	11 to 25	Ed's Garage	1 to 5
Florence Nightingale Hospice	11 to 25	G S Motors Ltd	1 to 5
FOCUS Sales Marketing	11 to 25	Hope Construction Materials	1 to 5
G K A Ltd	11 to 25	Ian Tofte	1 to 5
GKA Limited	11 to 25	Ips Educational Publishing	1 to 5
Hardmetal Technology Ltd	11 to 25	John Lamb Commercial Vehicles Ltd	1 to 5
Interquest Group	11 to 25	Jones & Cocks (2009) Ltd	1 to 5
Milspares Ltd	11 to 25	Just UPVC Doors Ltd	1 to 5
P & J Safety Ltd	11 to 25	Lewin House	1 to 5
Pindar Creative Ltd	11 to 25	Master Axe's Foundation	1 to 5
Robinsons of Aylesbury	11 to 25	Norman Stangroome Associates	1 to 5
Connection	6 to 10	Paul Mitchell	1 to 5
E H Oakley & Co Ltd	6 to 10	Quainton Carpets	1 to 5
Frame Communications Ltd	6 to 10	Ready Design & Technology Ltd	1 to 5
Geomatic Solutions Ltd	6 to 10	Scuba Ducks Dive Centre Ltd	1 to 5
Helpful Hirings Ltd	6 to 10	Sign Rite Grafix	1 to 5
Lynx Gymnastics Club Ltd	6 to 10	Sign Wizzard Ltd	1 to 5
Resound Ltd	6 to 10	Signs Express	1 to 5
Smashing Windows Ltd	6 to 10	Signum Sign Studio	1 to 5
Ace Self Storage	1 to 5	SMI Electrical Ltd	1 to 5
Activ-8 (Services) Ltd	1 to 5	Tablet Salt Direct	1 to 5
Activ-Air Automation Ltd	1 to 5	Time Management Support	1 to 5
Aditech Limited	1 to 5	Vagtune Services	1 to 5
Air Conditioning & Environmental Services Ltd	1 to 5	Vale Web Marketing Limited	1 to 5
Amill Engineering Ltd	1 to 5	BeauDelicious	Self only
Aquaid Franchising	1 to 5	Capture Experts UK Ltd	Self only
Auto Sport UK Ltd	1 to 5	Jam Consultancy	Self only
Aylesbury Tuck	1 to 5	Neil Symington Personal Training	Self only
Aylesbury Vale Dial A Ride Ltd	1 to 5	Sorted Media Productions Ltd	Self only
Aylesbury Window Company	1 to 5		

BBF managed the consultants' report that estimated HS2's cost to Buckinghamshire at £44m per annum during construction and will continue to lead on socio-economic work for Buckinghamshire as mitigation work progresses, having drafted the relevant section in the Buckinghamshire Blueprint document.

## 9.0 Businesses in Aylesbury Vale

The distribution of businesses in Aylesbury Vale is shown in the map below. With 363 businesses, Quarrendon has 4.5 per cent of the district's total, providing work for 8.6 per cent of the district's workforce.



**Businesses in Aylesbury Vale  
2013**

This map is reprinted from Ordnance Survey material with the permission of Ordnance Survey on behalf of the Controller of Her Majesty's Stationery Office. Crown Copyright. Unauthorised reproduction infringes Crown Copyright and may lead to prosecution or civil proceedings.  
© Copyright Buckinghamshire County Council 2013. 100013026 2013  
Imagery © GeoInformation.com



Produced by BSF  
13 November 2013

Scale: 1:250,000 at A4



<sup>i</sup> Travel to work data from the 2011 Census are expected to be released in 2014.

<sup>ii</sup> See <https://www.gov.uk/government/publications/english-indices-of-deprivation-2010>

<sup>iii</sup> See for example BBF's analysis of school leavers' destinations and educational attainment aged 19: <http://www.bbf.uk.com/download/226> and <http://www.bbf.uk.com/download/228>