

Aylesbury Vale Councillor Update Economic Profile of Oakfield Ward



April 2014



**VALE BUSINESS FLOOR SPACE
GREW BY 43,000m²
FROM 2008-2012**



**VERY SMALL COMPANIES
IN VALE 76% EMPLOYING
FEWER THAN 5 PEOPLE**



**10% OF
VALE WORKERS
ARE HOME BASED**

1.0 Introduction

Oakfield is home to 5,896 people and provides 2,700 jobs in 210 businesses. Of these businesses, 37 (17.6 per cent) are Buckinghamshire Business First members.

There were 2,973 employed people aged 16-74 living in Oakfield ward at the 2011 Census, three fewer than the 2,976 recorded in 2001. Over that period the working age population fell 18 to 3,966 while the total population rose 106 to 5,896. The number of households rose by 82 (3.9 per cent) to 2,209. **This isn't a significant percentage increase** and only places the ward 15th out of all wards in Aylesbury Vale. Based on the increase in number of households, the ward ranks 61st out of all wards in Buckinghamshire.

The largest companies in Oakfield include:

- Askeys The Silver Spoon Company;
- Aquavale;
- Danielson UK Ltd;
- Motts Travel;
- Possum Controls Ltd;
- AV Corporation Ltd; and
- Aylesbury Automation Limited

There are 47 **Job Seekers' Allowance claimants living in** Oakfield, representing 1.2 per cent of working age residents, including ten claimants aged 18-24 and five who have been claiming for more than twelve months.

Superfast broadband is expected to be available to 98 per cent of premises in the Oakfield ward by March 2016 with commercial providers responsible for 98 per cent. The Connected Counties project, run by BBF, deliver 0 per cent through its interventions in exchange areas. Universal Service Commitment eliminates sub 2 Mbps premises. BBF is seeking to deliver an extended superfast footprint via additional funding, adaptation of downstream technology and contract claw-back mechanism.

At the time of the 2001 Census¹, of the 3,070 employed residents, 777 people lived and worked in the ward, with the most common destinations by local authority district being:

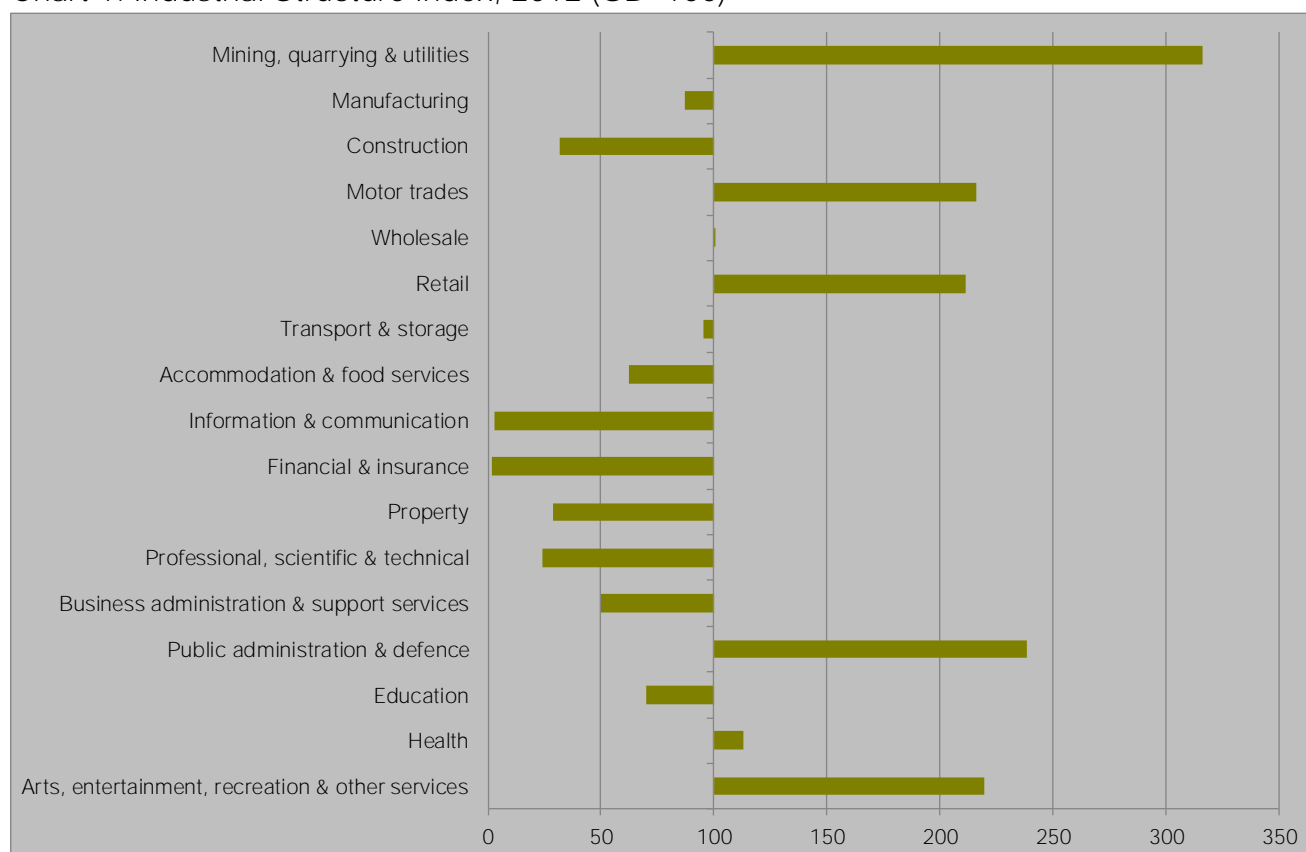
- Aylesbury Vale (2,199, 71.6 per cent)
- Wycombe (147, 4.8)
- Dacorum (111, 3.6)
- Chiltern (96, 3.1)
- South Oxfordshire (78, 2.5)
- Milton Keynes (55, 1.8)
- Westminster (34, 1.1)
- South Bucks (28, 0.9)

2.0 Industrial structure

There are 210 businesses located in Oakfield employing 2,700 people. Of these businesses, 144 are micro businesses, employing fewer than 10 people.

Oakfield is over-represented in a number of industrial sectors including motor trades and retail. Perhaps the most significantly over-represented ward is mining, quarrying and utilities which accounts for 4.0 per cent of employment in the ward. The proportion ranks Oakfield at 677th out of all wards for employment in the sector. Other over-represented sectors include public administration and defence which accounts for 11.5 per cent of employment and ranks the ward at 650th out of all wards. Furthermore, it's clear that arts, entertainment and other services are over-represented at 9.8 per cent of employment. This ranks the ward 947th out of all wards for employment in the sector.

Chart 1: Industrial Structure Index, 2012 (GB=100)



Source: BRES, ONS, 2013

Oakfield is under represented in a number of sectors, most notably financial and insurance and information and communication. These sectors account for only 0.1 per cent of employment each and are ranked at 6,091st and 8083rd out of all wards respectively for proportion of employment in the respective sectors.

2.1 The Industrial Strategy and the Plan for Growth

The Government's economic objective is to secure sustainable economic growth. The Plan for Growth and the Industrial Strategy set out policies to realise this objective and to rebalance the economy, which include focusing on sectors expected to deliver strong growth. Aylesbury Vale's economy is well-represented in these sectors, particularly aerospace, the information economy and professional and business services.

While Oakfield provides jobs in these sectors, the industrial strategy sector where the ward delivers the highest share of national employment is education, which accounts for 6.3 per cent of employment, ranking Oakfield at 5701st among English wards.

Table 1: Employment in selected industrial strategy sectors, 2012

	Education	Professional and Business Services	Construction	Information Economy
Aylesbury Vale	10.1	16.3	5.4	2.7
Buckinghamshire	9.3	15.0	5.5	4.4
England	4.6	12.9	4.6	3.0
Oakfield	6.3	2.2	1.3	0.1

Source: BRES, ONS, 2013

At 2.2 per cent, the proportion of Oakfield's jobs in the professional and business services sector is the 7,438th highest of all wards in England, the proportion is well below that of both the county level and the district level.

3.0 Labour market

At 68.1 per cent of 16-74 year olds, Oakfield's employment rate is among the highest in the country. Oakfield has a proportion of 25.4 per cent of its residents qualified to degree level or higher. Furthermore, 40.7 per cent work in managerial, professional or technical occupations.

In Aylesbury Vale the wards most similar to Oakfield are Elmhurst & Watermead, Mandeville & Elm Farm and Coldharbour with four of the other 35 wards among the top thousand closest matches. The least similar ward in the district is Long Crendon, one of three wards in Aylesbury to rank lower than the 7,000th closest match along with Stewkley and Quainton.

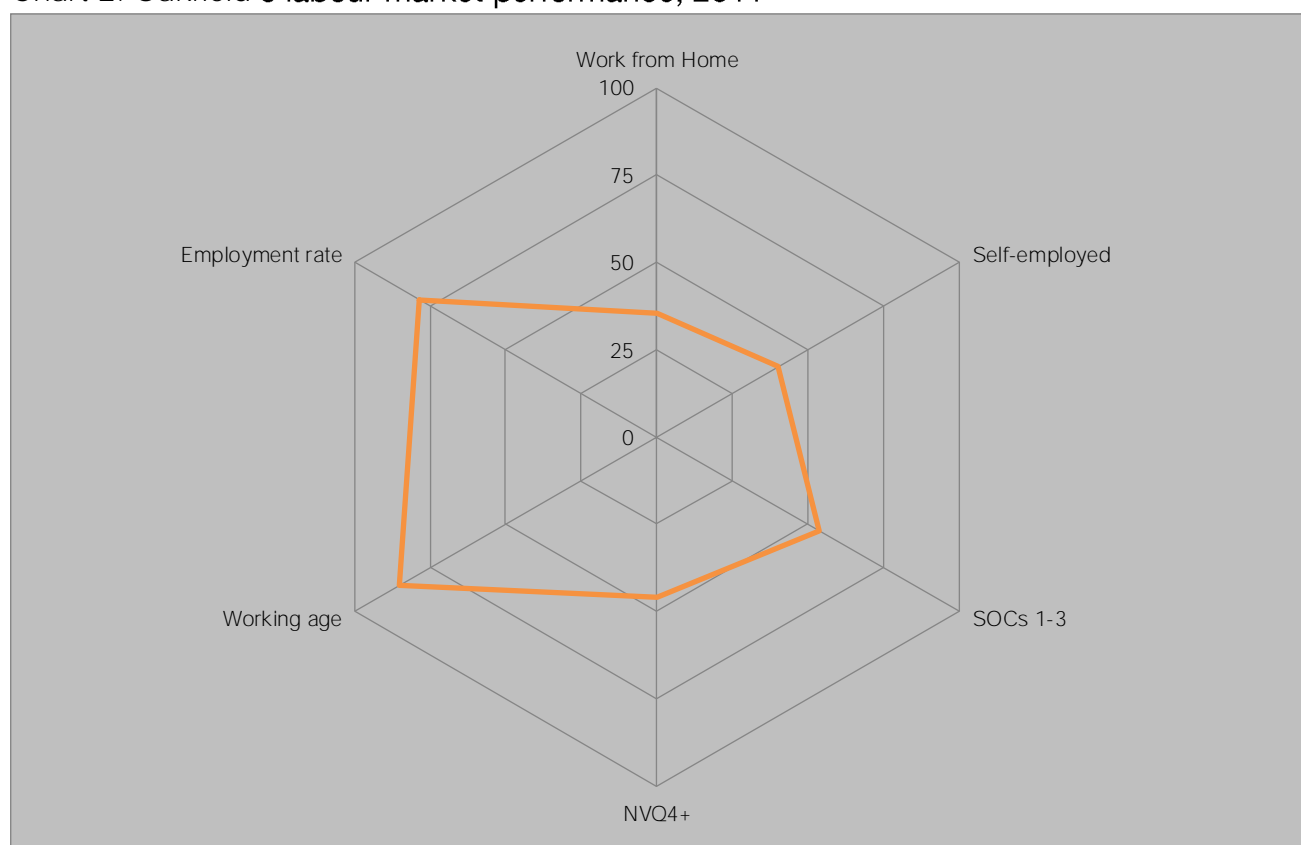
Table 2: Oakfield's labour market performance & nearest neighbours, 2011

Ward Name	Work from Home	Self-employed	SOCs 1-3	NVQ4+	Working age	Employment rate
Oakfield	2.7	9.0	40.7	25.4	67.3	68.1
Elmhurst and Watermead	2.8	9.1	39.6	25.2	66.6	68.8
Mandeville and Elm Farm	2.9	8.6	42.6	29.4	68.6	72.8
Coldharbour	3.0	8.7	45.8	30.9	71.4	78.5
Walton Court and Hawkslade	2.4	8.0	33.7	21.0	69.2	72.7
Aylesbury Central	3.7	9.0	49.0	34.6	71.5	73.1

Source: Census, 2011

Oakfield has a low level of those who work from home and are self-employed. Furthermore, as stated previously, the ward has a low level of those educated to degree level or higher and those working in managerial, professional and technical roles. Oakfield looks to have a fairly high employment rate and level of working age residents.

Chart 2: Oakfield's labour market performance, 2011

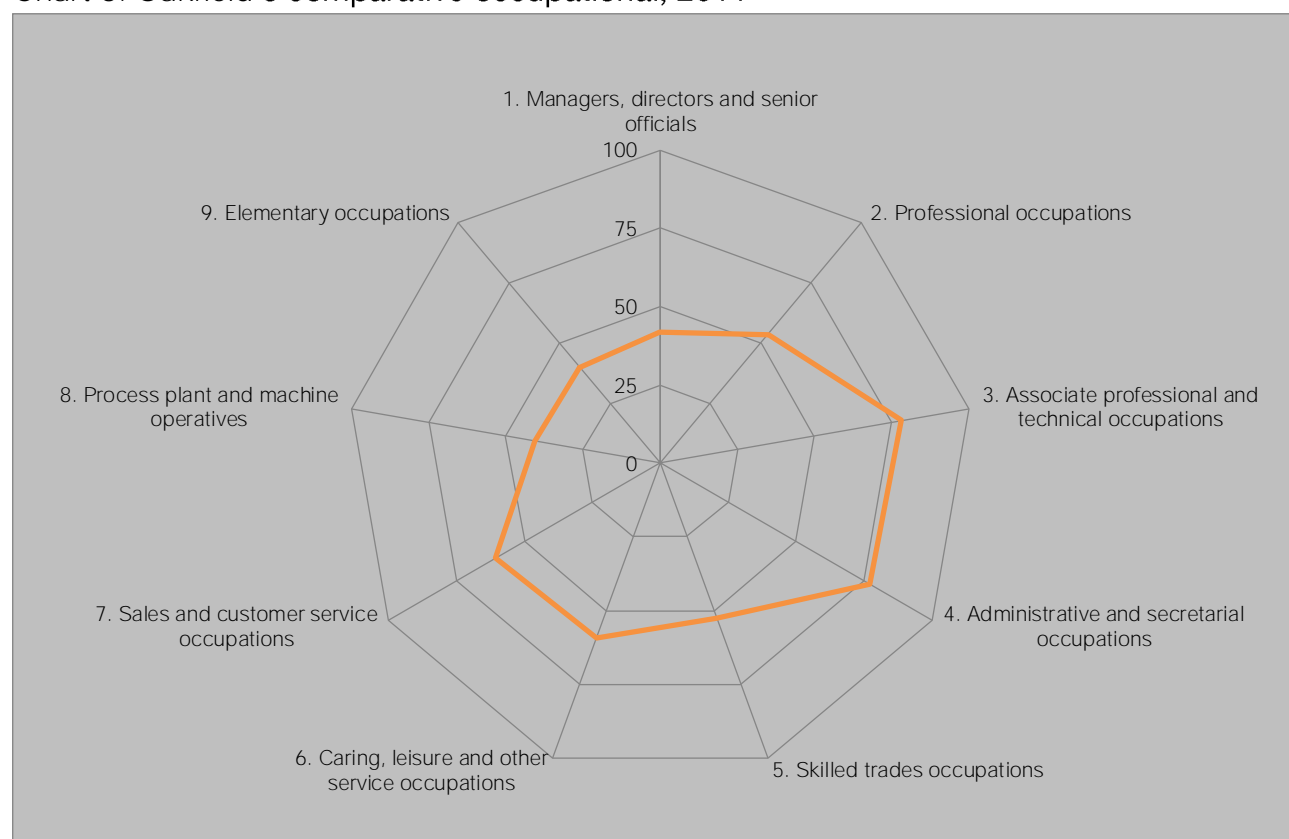


Source: Census, 2011

4.0 Occupational Structure

Oakfield's **occupational structure** is fairly evenly spread and, unlike other wards in the district, **isn't particularly** skewed towards the higher skilled and better remunerated occupations. Oakfield has 40.7 per cent of working residents employed in managerial, professional and technical occupations, only ranking in the top quartile nationally for technical occupations. Oakfield shows strong evidence of employment in a number of other less well remunerated occupations with 10.0 per cent and 8.6 per cent employed in caring and sales based occupations respectively ranking in the third quartile for each.

Chart 3: Oakfield's comparative occupational, 2011



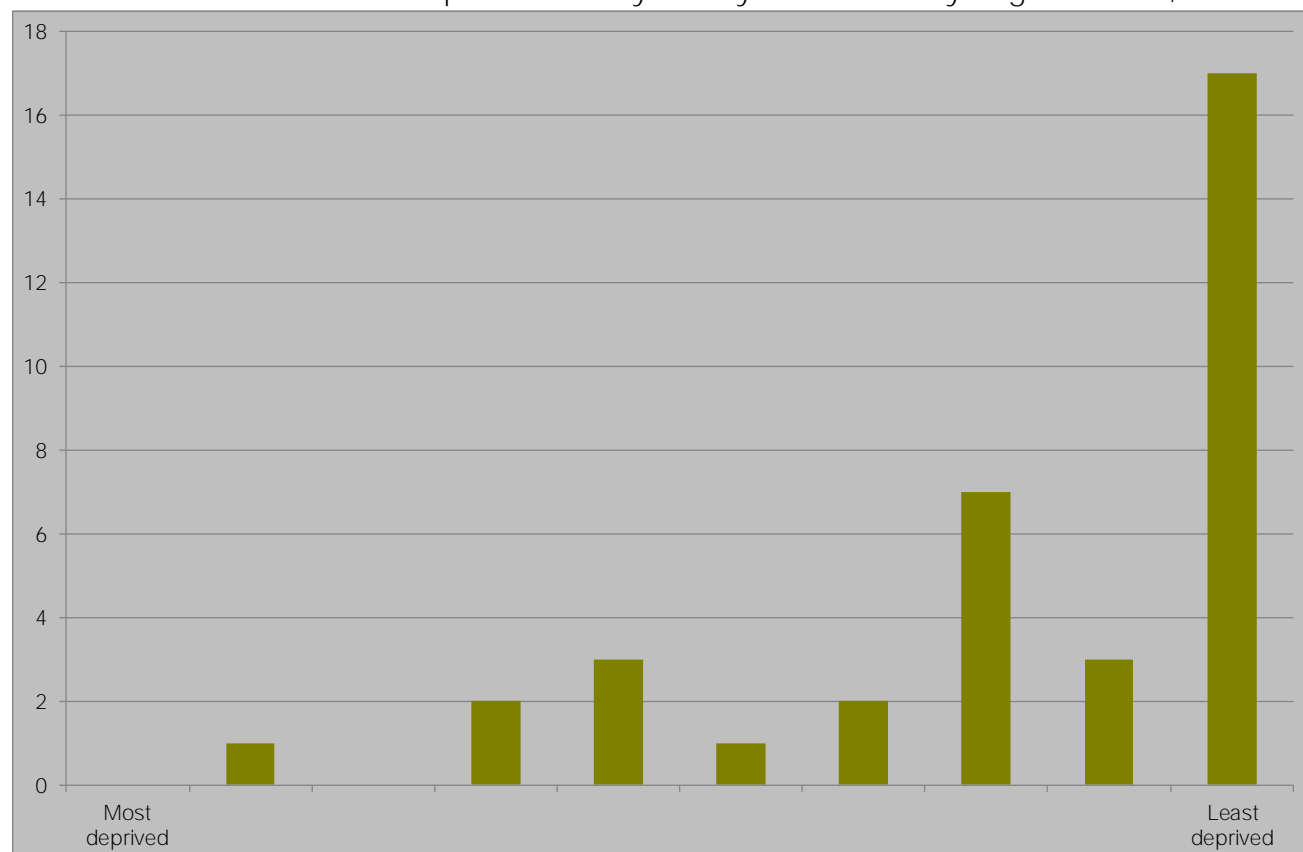
Source: Census, ONS, 2011

5.0 Deprivation

Buckinghamshire has the lowest level of economic deprivation of any Local Enterprise Partnership, with Aylesbury Vale having the 37th lowest economic deprivation of all 326 local authority districts in England, behind South Bucks (10th) and Chiltern (13th) but ahead of Wycombe (69th). Chart 4Error! Reference source not found. demonstrates the **concentration of Aylesbury Vale's wards among the least deprived in England with 17 of the 36 wards featuring among the least deprived 10 per cent of all wards in England and only six ranking among the most deprived half of English wards, a stark contrast to the London Borough of Newham where no ward ranks above halfway, highlighting the challenge Aylesbury Vale faces to attract resource tackle deprivation.**

Oakfield has the 2,834th lowest economic deprivation of the 7,707 wards in England and is the 9th most economically deprived of the 36 Aylesbury Vale wards. Oakfield is the 81st least economically deprived among the 108 wards in Buckinghamshire. The position of **Aylesbury Vale's wards** in England is shown in below, with Oakfield one of the two wards shown in England's fourth least deprived decile.

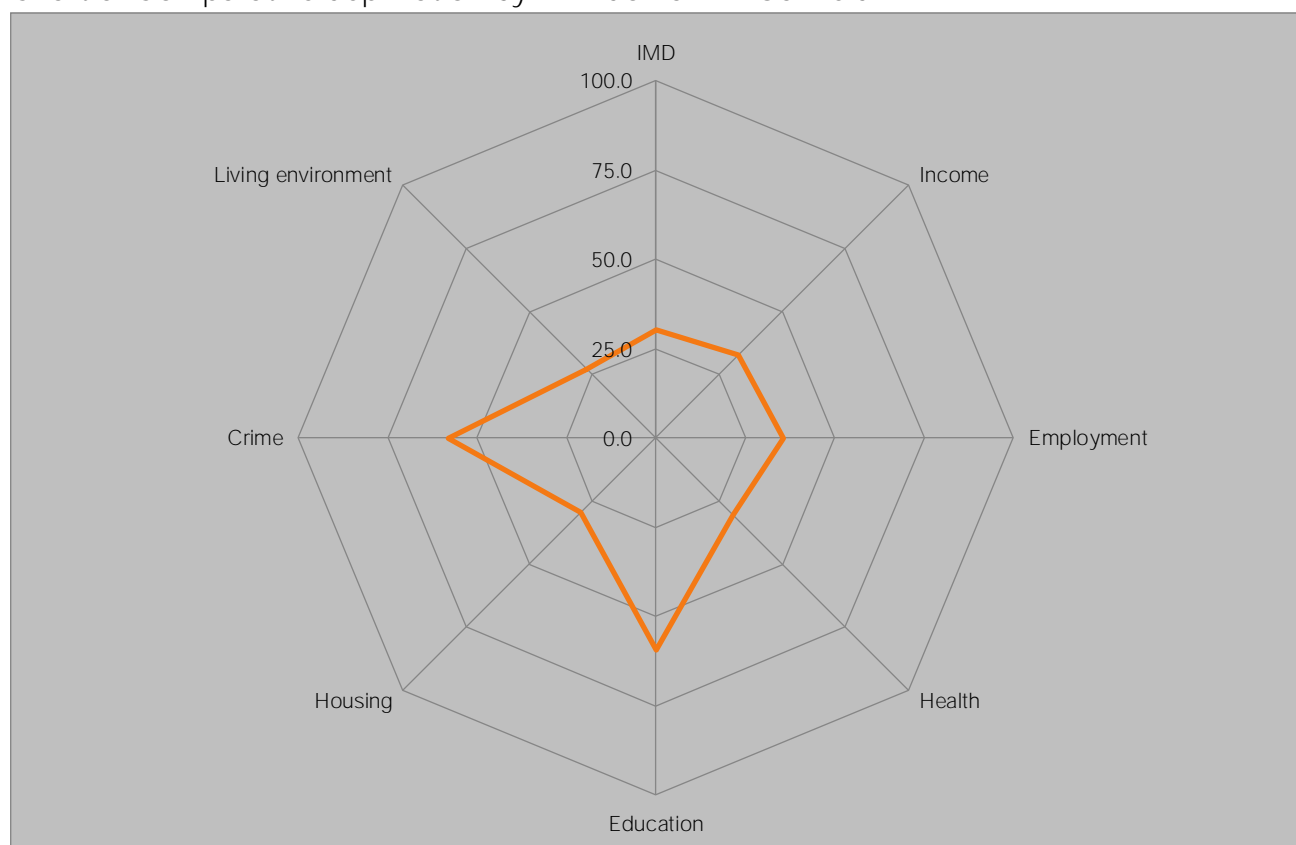
Chart 4: Relative economic deprivation of Aylesbury Vale wards by English decile, 2009



Source: DCLG, 2012

Oakfield ranks 5,394th out of all wards in England based on the Index of Multiple Deprivationⁱⁱ; this makes it among the less deprived deciles in England, well below Aylesbury Vale's **average rank of 6006th**, demonstrating that the ward is more deprived than the district as a whole.

Chart 5: Comparative deprivation by IMD domain in Oakfield



Source: DCLG, 2010

The wards in Aylesbury Vale most closely matching Oakfield's deprivation profile are presented in Table 3. Nationally, the closest matches are Brackley South (South Northamptonshire), Fawley Blackfield & Langley (New Forest) and Fairstone (Blaby), while Coldharbour and Buckingham North are the most similar in Aylesbury Vale ranking as the 33rd and 419th most similar of all English wards. Of the 36 Aylesbury Vale wards three are among the 1,000 best matches, however Stewkley sits at least similar at only the 5,575th closest match.

Table 3: Deprivation Nearest Neighbours

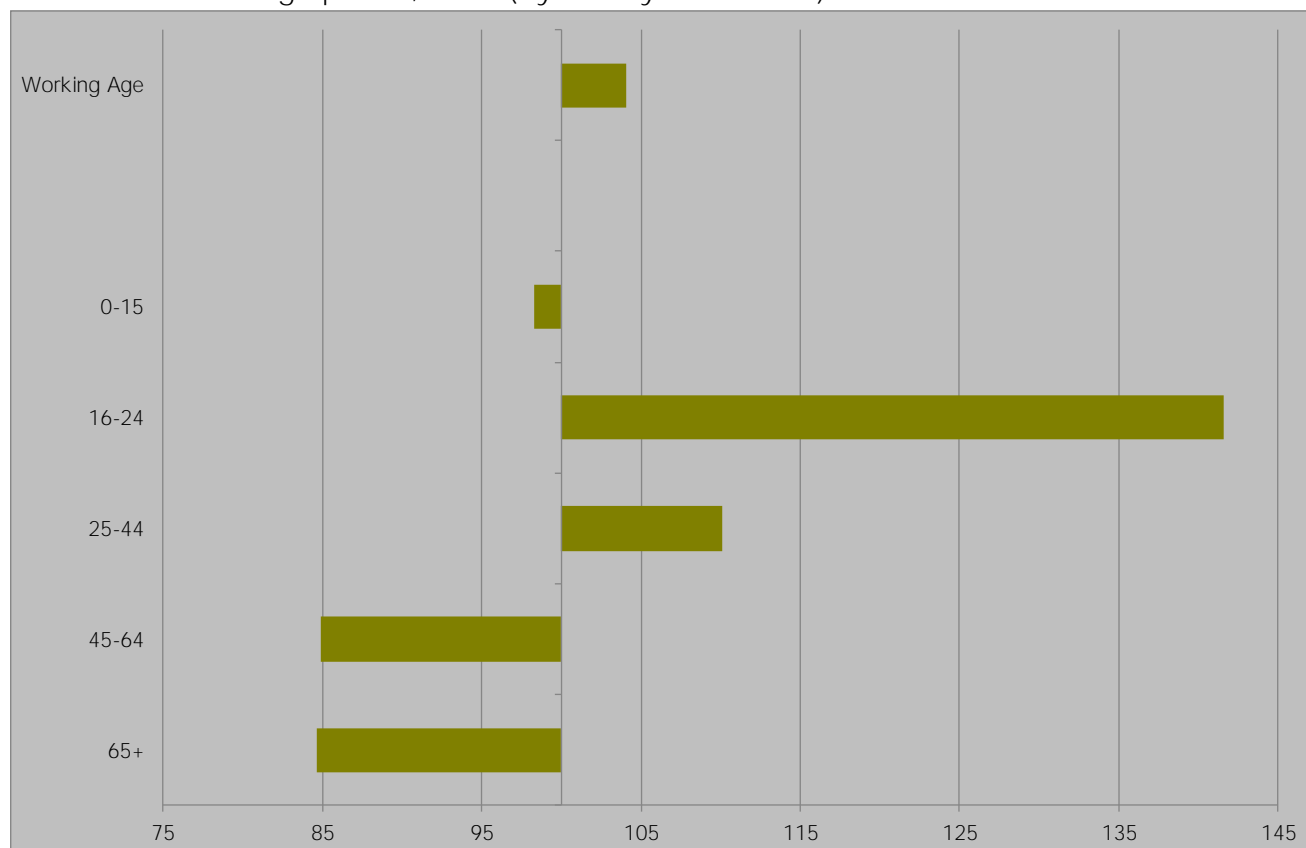
Ward	IMD	Income	Employment	Health	Education	Housing	Crime	Living environment
Oakfield	30.4	32.6	35.8	30.5	59.2	29.7	57.9	27.3
Coldharbour	25.3	33.5	27.0	25.2	45.6	43.3	59.7	15.0
Buckingham North	16.5	29.6	13.9	20.9	31.2	38.3	49.9	13.2
Mandeville and Elm Farm	17.7	22.3	19.2	27.0	42.3	61.6	37.2	7.8
Wing	8.8	29.9	22.0	25.4	25.3	19.8	28.9	10.5
Elmhurst and Watermead	57.7	62.5	49.4	56.7	65.0	52.7	63.5	35.4

Source: DCLG, 2010

6.0 Demography

At 36.6 years, Oakfield's **average age is well** below the 40.0 recorded across Aylesbury Vale as well as the county average of 41.0. This makes Oakfield one of the younger wards in England as suggested by over-representation of 16-24 year olds in Chart 6. In terms of age structure, two of the wards in Aylesbury Vale most similar to Oakfield are Aylesbury Central and BLuffield Abbey with average ages of 36.5 and 36.9 respectively.

Chart 6: Oakfield age profile, 2011 (Aylesbury Vale = 100)



Source: Census, ONS, 2013

Oakfield has a higher proportion of working age residents than Aylesbury Vale at 67.3 per cent. This ranks Oakfield at 1,211th of all wards in England based on proportion of residents at working age. Oakfield has a significantly high proportion of those aged 0-15 at 20.1 per cent. This ranks Oakfield at 1,979th of all wards in England putting it among the top 40 per cent of all wards in England for this age bracket.

Table 4: Aylesbury Vale's demography by ward

	0-15	16-64	65+
Aylesbury Vale	20.4	64.6	15.0
Aston Clinton	18.4	62.7	18.9
Aylesbury Central	16.2	71.5	12.3
Bedgrove	19.1	59.7	21.2
Bierton	16.3	59.8	23.9
Brill	18.3	61.8	19.9
Buckingham North	18.0	66.6	15.4
Buckingham South	20.8	66.4	12.8
Cheddington	20.0	64.8	15.2
Coldharbour	21.6	72.3	6.1
Edlesborough	19.2	62.8	18.1
Elmhurst and Watermead	22.0	66.6	11.4
Gatehouse	22.8	64.4	12.8
Great Brickhill	17.1	65.0	17.9
Great Horwood	20.6	64.9	14.5
Grendon Underwood	18.3	70.7	11.0
Haddenham	19.9	62.7	17.4
Long Crendon	19.1	61.0	19.9
Luffield Abbey	23.3	63.2	13.6
Mandeville and Elm Farm	19.4	68.6	12.0
Marsh Gibbon	23.6	63.4	13.0
Newton Longville	16.8	62.2	21.0
Oakfield	20.1	67.3	12.7
Pitstone	22.9	63.8	13.3
Quainton	20.9	61.7	17.4
Quarrendon	24.2	66.5	9.3
Southcourt	25.2	64.2	10.6
Steeple Claydon	18.8	66.8	14.4
Stewkley	20.6	60.7	18.7
Tingewick	20.4	62.1	17.5
Waddesdon	20.7	64.6	14.7
Walton Court and Hawkslade	23.9	69.2	6.9
Weedon	18.3	64.9	16.8
Wendover	21.8	58.8	19.4
Wing	18.3	64.0	17.6
Wingrave	18.4	65.4	16.2
Winslow	17.2	61.9	20.9

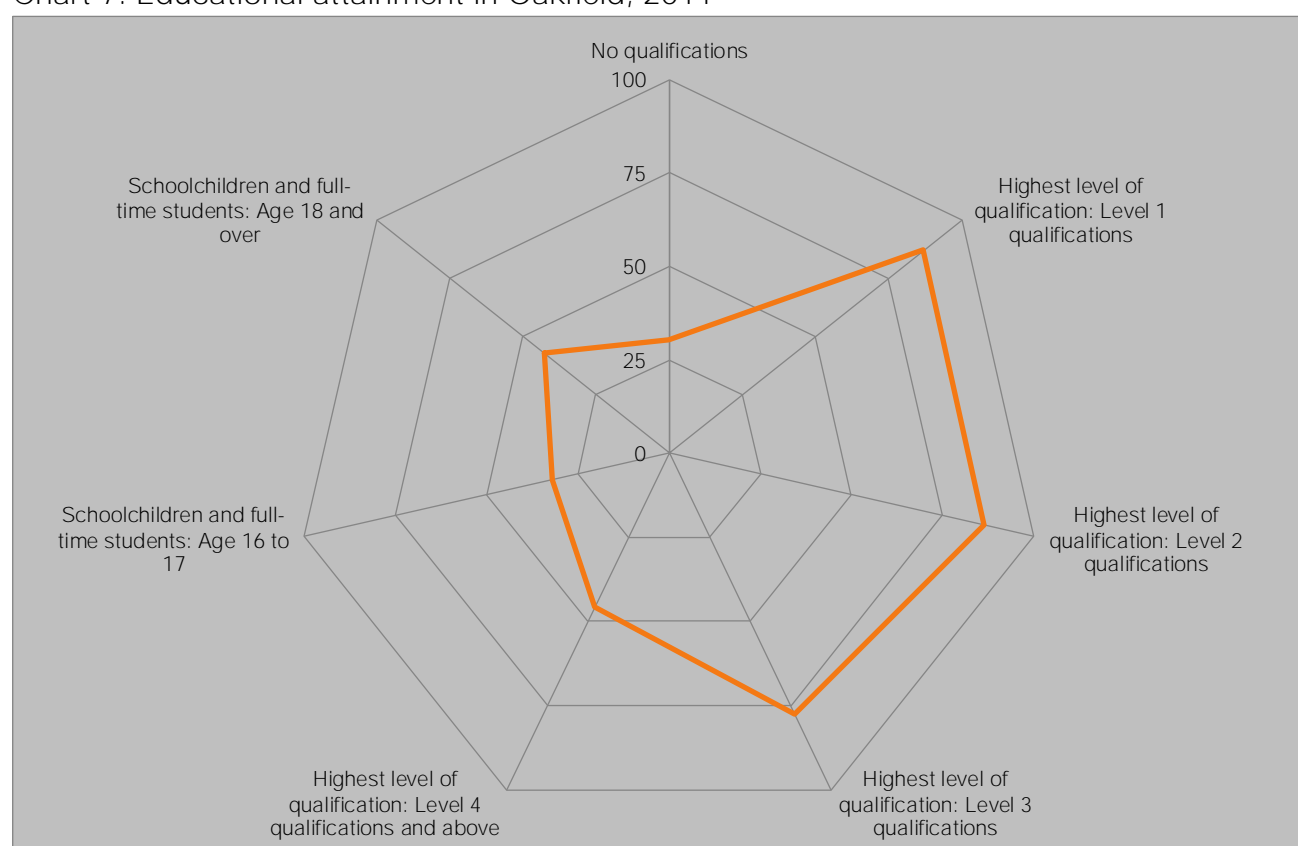
Source: Census, 2011

7.0 Educational attainment

Aylesbury Vale is one of the best qualified places in the country, with only 17.8 per cent of residents aged 16 and over holding no qualifications, well below the 22.5 per cent recorded across the country as a whole, while 32.0 per cent hold degree level qualifications, well above the national level of 27.4 per cent.

Oakfield's population has a lower educational attainment than the district's overall, with 18.3 per cent having no qualifications and only 25.4 per cent educated to degree level or higher. Only 2.5 per cent of Oakfield residents are schoolchildren or full-time students aged 16 to 17. This is significantly lower than other wards in Aylesbury Vale. The ward's performance compared to all wards in England is presented in Chart 7 below.

Chart 7: Educational attainment in Oakfield, 2011



Source, Census, 2011

Oakfield is most similar to Biggleswade South (Central Bedfordshire), Throop & Muscliff (Bournemouth) and Banbury Hardwick (Cherwell) of all English wards with regard to educational attainment. In the district the most similar wards are Walton Court & Hawkslade, Coldharbour and Mandeville & Elm Farm, with five of the other 35 wards ranking inside the top 1000 matches but with Long Crendon ranking outside the top 7,000 and a further four more ranking outside the top 6,000.

Table 5: Educational attainment nearest neighbours, 2011

	No qualifications	Highest level of qualification: Level 1 qualifications	Highest level of qualification: Level 2 qualifications	Highest level of qualification: Level 3 qualifications	Highest level of qualification: Level 4 qualifications and above	Schoolchildren and full-time students: Age 16 to 17	Schoolchildren and full-time students: Age 18 and over
Oakfield	18.3	16.5	17.9	12.9	25.4	2.5	2.6
Walton Court and Hawkslade	21.0	18.9	17.9	12.5	21.0	2.5	2.3
Coldharbour	13.7	15.5	17.3	14.1	30.9	2.0	2.0
Mandeville and Elm Farm	14.6	14.0	18.0	14.0	29.4	2.2	3.7
Grendon Underwood	15.1	15.5	19.9	12.9	28.7	3.2	2.9
Steeple Claydon	16.3	14.6	16.6	13.3	31.5	2.4	1.7

Source: Census, ONS, 2011

7.1 Oakfield **Schools' OFSTED reports**

Buckinghamshire has the strongest schools performance any LEPⁱⁱⁱ, with over a quarter of school leavers' going on to a Russell Group university, including 3.7 per cent to Oxbridge, and 88.0 per cent of young people in the county achieving at least NVQ level 2 by 19. Oakfield's schools make a full contribution to that performance as demonstrated by their most recent OFSTED reports, which are summarised below.

7.1.1 Broughton Junior School (Key Stage 2)

In the 2012 English test and assessment, 92 per cent of pupils attained Level 4 or higher, a result which placed the school in the top 40 per cent of all schools. Of these, 92 per cent of pupils attained Level 4 or higher in the Key Stage 2 writing test and 90 per cent of pupils attained Level 4 or higher in the Key Stage 2 reading test, The results placed the school in the middle 20 per cent and top 40 per cent respectively. In 2012, 94 per cent of pupils attained Level 4 or higher in the Key Stage 2 maths test and assessment. This is an increase of 8 percentage points on the previous year and puts the school in the top 40 per cent of all schools.

In 2012, 74 per cent of pupils attained their expected progress in English, a result which found the school in the lowest 20 per cent of all schools. In the same year, 87 per cent of pupils attained their expected progress in maths, an increase of 10 percentage points on 2011. This result placed the school in the lowest 40 per cent of all schools.

8.0 Buckinghamshire Business First in Oakfield

Of the 210 businesses in Oakfield, 37, or 17.6 per cent are Buckinghamshire Business First members. BBF members in the ward are presented in Table 6 below.

Table 6: BBF members in Oakfield, November 2013

Business	Employee Size Band	Business	Employee Size Band
Buckinghamshire Fire & Rescue Service	None	AVE Integrations Limited	1 to 5
Askeys The Silver Spoon Company	101 to 250	Aylesbury Autotech	1 to 5
Danielson UK Ltd	51 to 100	Bay Lodge	1 to 5
Motts Travel	51 to 100	Chiltern Plumbing	1 to 5
AV Corporation Ltd	26 to 50	Computer Trade Centre	1 to 5
Aylesbury Automation Limited	26 to 50	CW Interiors	1 to 5
SITA (UK) Ltd	26 to 50	Dev People	1 to 5
Aylesbury Body Language	11 to 25	Ellis Day Ltd	1 to 5
B C Electrical Techniques Ltd	11 to 25	Feng Shui	1 to 5
Bucks & MK Sports Partnership	11 to 25	Force One Air Conditioning Ltd	1 to 5
Chadro Tool Co Ltd	11 to 25	House Proud Cleaning	1 to 5
R & A Engineering Ltd	11 to 25	J D S School Of Motoring	1 to 5
Cartridge World Ltd	6 to 10	Laptop & PC Store	1 to 5
Fineye Promotion & Design	6 to 10	Master Axe's Foundation	1 to 5
Pelican Print	6 to 10	Personal Computer Services	1 to 5
Rogue Racing Ltd	6 to 10	Quality Dental Care	1 to 5
Traymark Components Ltd	6 to 10	Aylesbury Automatic Leisure	Self only
A Servicing & Tyres	1 to 5	Driven	Self only
Aston Building Surveyors Ltd	1 to 5		

Of these, a number have attended events held by Buckinghamshire Business First. Such events have been attended by a number of other businesses across the Aylesbury Vale district and serve as an excellent opportunity for networking and business development.

BBF managed the consultants' report that estimated HS2's cost to Buckinghamshire at £44m per annum during construction and will continue to lead on socio-economic work for Buckinghamshire as mitigation work progresses, having drafted the relevant section in the Buckinghamshire Blueprint document.

ⁱ Travel to work data from the 2011 Census are expected to be released in 2014.

ⁱⁱ See <https://www.gov.uk/government/publications/english-indices-of-deprivation-2010>

ⁱⁱⁱ See for example BBF's analysis of school leavers' destinations and educational attainment aged 19: <http://www.bbf.uk.com/download/226> and <http://www.bbf.uk.com/download/228>