


# Wycombe Councillor Update

## Economic Profile of Micklefield Ward



April 2014

**64%**   
OF WYCOMBE COMPANIES EMPLOY  
FEWER THAN 5 PEOPLE

 **6%**  
OF WYCOMBE WORKERS  
ARE HOME BASED

**13%** OF WYCOMBE  
WORKERS ARE  
SELF-EMPLOYED 

## 1.0 Introduction

Micklefield is home to 5,807 people and provides 400 jobs in 36 businesses. Of these businesses, 14 (38.9 per cent) are Buckinghamshire Business First members.

There were 2,640 employed people aged 16-74 living in Micklefield ward at the 2011 Census, 97 more than the 2,543 recorded in 2001. Over that period the working age population rose 179 to 3,746 while the total population fell 443 to 5,087. The number of households rose by 104 (4.7 per cent) to 2,315. This is a significant percentage increase and places the ward 14<sup>th</sup> out of all wards in Wycombe. Based on the increase in number of households, the ward ranks 45<sup>th</sup> out of all wards in Buckinghamshire.

The largest companies in Micklefield include:

- Tetra Pak Processing UK Ltd;
- Ant Telecommunication;
- Phoenix IT;
- Phoenix IT group;
- Star Microtronics Europe Ltd;
- Deep Clean Kitchens Ltd; and
- Ecobrand.

There are 111 **Job Seekers' Allowance claimants living in** Micklefield, representing 3.1 per cent of working age residents, including 60 claimants aged 25-49 and 65 who have been claiming for less than six months.

Superfast broadband is expected to be available to 99 per cent of premises in the Micklefield ward by March 2016 with commercial providers responsible for 99 per cent. The Connected Counties project, run by BBF, Will deliver non superfast broadband service following sufficient coverage from commercial providers. BBF is seeking to deliver an extended superfast footprint via additional funding, adaptation of downstream technology and contract claw-back mechanism.

At the time of the 2001 Census<sup>1</sup>, of the 2,662 employed residents, 376 people lived and worked in the ward, with the most common destinations by local authority district being:

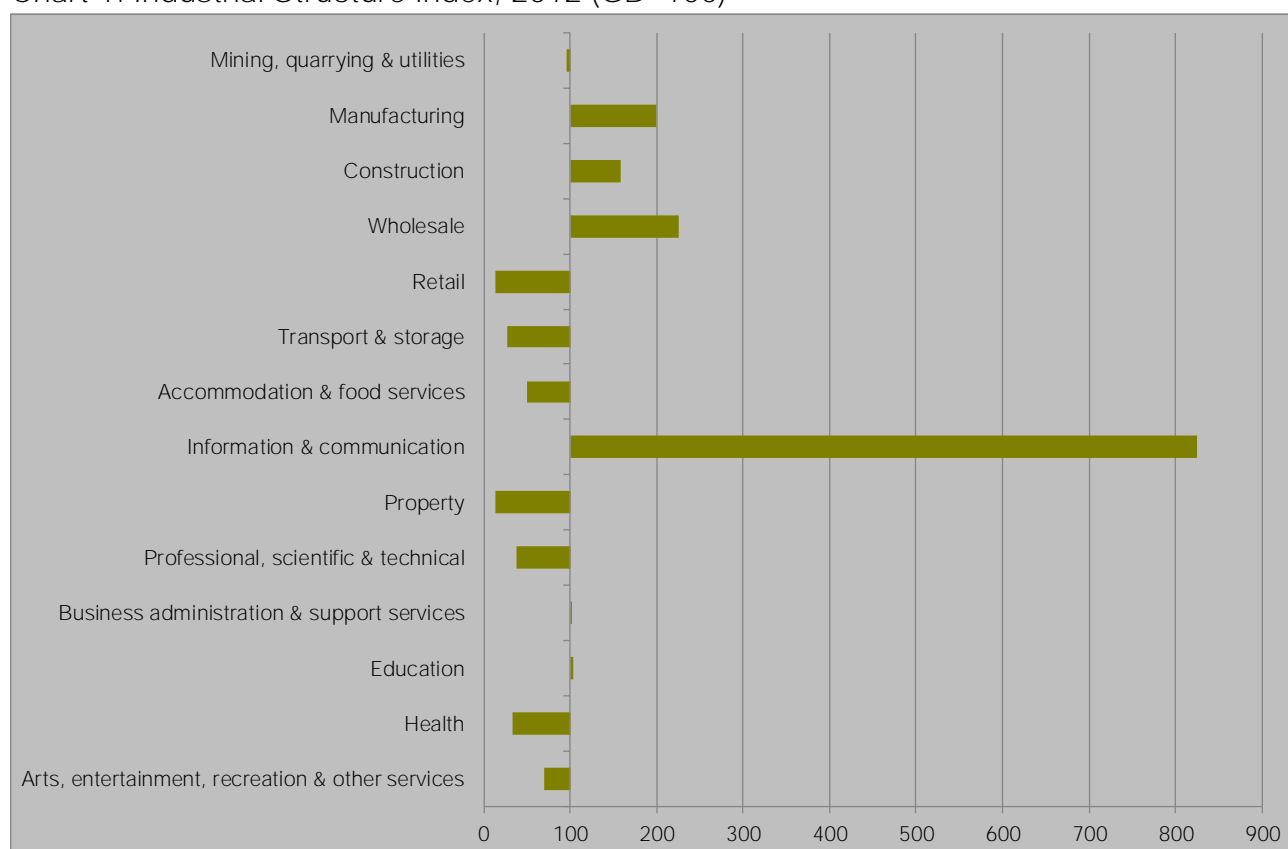
- Wycombe (1,865, 68.2)
- Chiltern (134, 5.0)
- South Buckinghamshire (101, 3.8)
- Hillingdon (74, 2.8)
- Slough (71, 2.7)
- Windsor & Maidenhead (63, 2.4)
- Aylesbury Vale (34, 1.3)
- South Oxfordshire (33, 1.2)

## 2.0 Industrial structure

There are 36 businesses located in Micklefield employing 400 people. Of these businesses, 30 are micro businesses, employing fewer than 10 people.

Micklefield is over-represented in Information and Communication which accounts for 31.1 per cent of employment. Based on this proportion, the ward is ranked 39<sup>th</sup> out of all wards. The proportion of employment in Wholesale is higher than the national average at 9.0 per cent ranking the ward 990 out of all wards. Manufacturing and construction are both over-represented accounting for 16.8 per cent of employment and 7.3 per cent of employment respectively. Based on the proportions of employment, the ward is ranked 2,980<sup>th</sup> in construction and 1,485<sup>th</sup> in manufacturing.

Chart 1: Industrial Structure Index, 2012 (GB=100)



Source: BRES, ONS, 2013

Micklefield is under-represented in a number of sectors including; retail; transport & storage; accommodation & food services; property; professional, scientific & technical; health; and arts, entertainment, recreation & other services. Retail covers just 1.5 per cent of employment ranking the ward 8,013<sup>th</sup> out of all wards. Transport & storage makes up 1.2 per cent of employment ranking the ward 5,337<sup>th</sup> out of all wards. Finally, property covers just 0.2 per cent of employment and based on this proportion the ward is ranked 6,576<sup>th</sup> out of all wards.

## 2.1 The Industrial Strategy and the Plan for Growth

The Government's economic objective is to secure sustainable economic growth. The Plan for Growth and the Industrial Strategy set out policies to realise this objective and to rebalance the economy, which include focusing on sectors expected to deliver strong growth. Wycombe's economy is well-represented in these sectors, particularly aerospace, the information economy and professional and business services.

While Micklefield provides jobs in these sectors, the industrial strategy sector where the ward delivers the highest share of national employment is the information economy which accounts for 23.1 per cent of employment, ranking Micklefield at 44<sup>th</sup> among English wards. The proportions of jobs in Micklefield in Industrial Strategy sectors are presented in Table 1.

Table 1: Employment in selected industrial strategy sectors, 2012

	Construction	PBS	Information Economy	Education
Wycombe	5.4	12.4	6.6	8.9
Buckinghamshire	5.2	14.7	4.4	9.7
England	4.2	12.1	2.9	9.2
Micklefield	5.6	3.6	23.1	9.5

Source: BRES, ONS, 2013

At 9.5 per cent, the proportion of Micklefield's jobs in the education sector is the 4,274<sup>th</sup> highest of all wards in England, the proportion is above that of both the country level and the district level.

## 3.0 Labour market

At 64.5 per cent of 16-74 year olds, Micklefield's employment rate is among the highest in the country. Micklefield has a proportion of 21.5 per cent of its residents qualified to degree level or higher. Furthermore, 32.3 per cent work in managerial, professional or technical occupations.

In Wycombe the wards most similar to Micklefield are Disraeli and Totteridge with none of the other 27 wards among the top thousand closest matches. The least similar ward in the district is Hambledon Valley, one of six wards in Wycombe to rank lower than the 8,000<sup>th</sup> closest match along with Marlow North & West, Bledlow & Bradenham, Greater Marlow, Icknield and Lacey Green, Speen & The Hampdens.

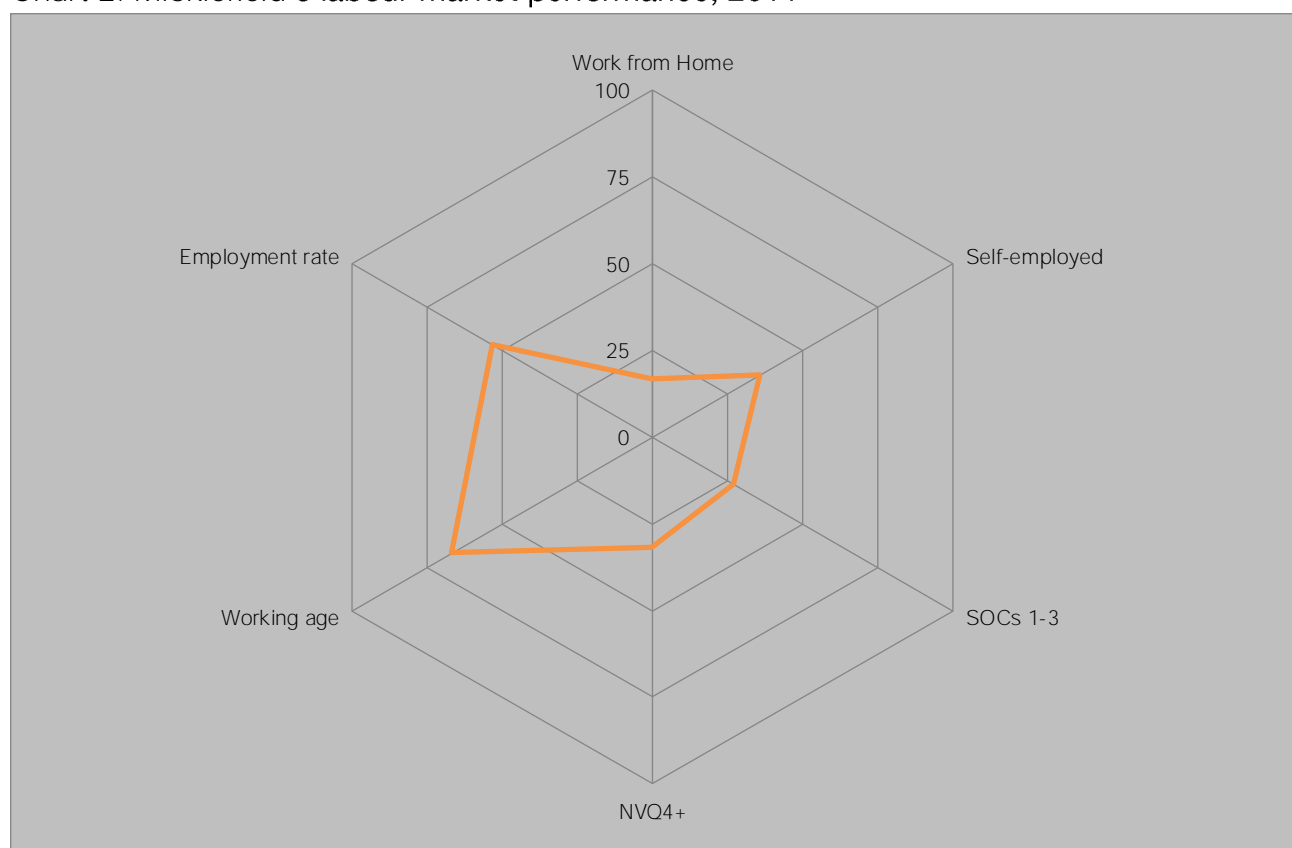
Table 2: Micklefield's labour market performance &amp; nearest neighbours, 2011

	Work from Home	Self-employed	SOCs 1-3	NVQ4+	Working age	Employment rate
Chiltern Rise						
Micklefield	1.8	8.6	32.3	21.5	64.5	64.5
Disraeli	2.6	8.5	37.9	25.1	69.2	61.4
Totteridge	2.9	9.1	40.9	27.2	63.9	65.8
Oakridge and Castlefield	1.8	9.1	27.3	20.4	67.1	56.1
Booker and Cressex	3.4	8.6	40.2	24.1	62.1	64.1
Bowerdean	2.8	9.6	39.5	27.1	67.6	60.3

Source: Census, 2011

Micklefield has a low level of those who work from home and a low level of those who are self-employed. Furthermore, as stated previously, the ward has a low level of those educated to degree level or higher and those working in managerial, professional and technical roles ranking in the second lowest quartile for both. Micklefield looks to have an above average employment rate and a high level of working age residents.

Chart 2: Micklefield's labour market performance, 2011

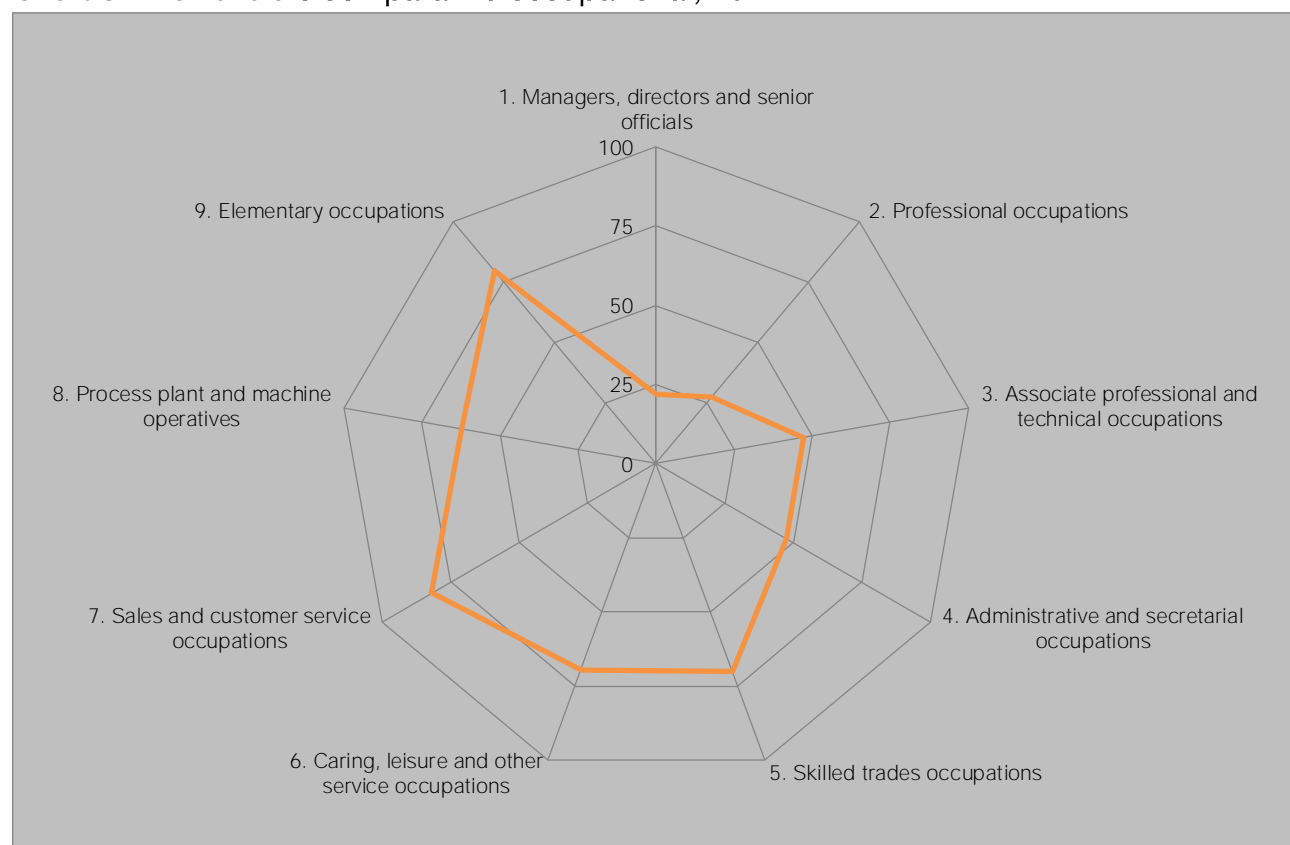


Source: Census, 2011

## 4.0 Occupational Structure

Micklefield's occupational structure is skewed towards the higher skilled and better remunerated occupations, with 32.3 per cent of working residents employed in managerial, professional and technical occupations, ranking in the second lowest quartile nationally for technical and professional occupations and ranking in the lowest quartile for managerial occupations. In contrast Micklefield ranks in the top quartile for other occupations, with 14.0 per cent of working residents employed in elementary occupations.

Chart 3: Micklefield's comparative occupational, 2011



Source: Census, ONS, 2011

## 5.0 Deprivation

Buckinghamshire has the lowest level of economic deprivation of any Local Enterprise Partnership, with Wycombe having the 13th lowest economic deprivation of all 326 local authority districts in England, behind South Bucks (10th) but ahead of Aylesbury (37th) and Wycombe (69th). Chart 4 demonstrates the concentration of Wycombe's wards among the least deprived in England with 12 of the 25 wards featuring among the least deprived 10 per cent of all wards in England and only three ranking among the most deprived half of English wards, a stark contrast to the London Borough of Newham where no ward ranks above halfway, highlighting the challenge Wycombe faces to attract resources to tackle deprivation.

Micklefield has the 6,430<sup>th</sup> lowest economic deprivation of the 7,707 wards in England and is the most economically deprived of the 28 Wycombe wards. Micklefield is the most economically deprived among the 108 ward in Buckinghamshire. The position of Wycombe's wards in England is shown in Chart 4 below, with Micklefield one of the two wards shown in England's second most deprived decile.

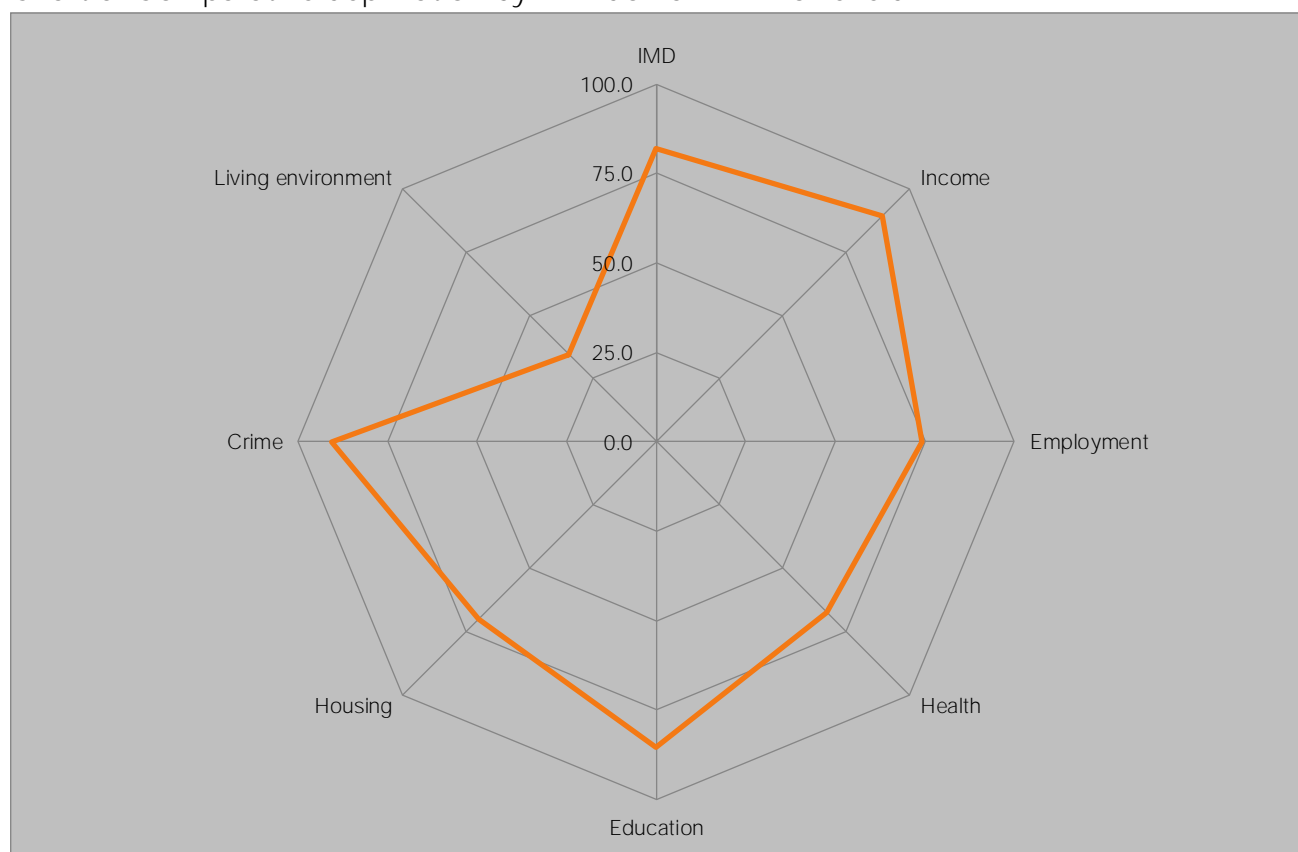
Chart 4: Relative economic deprivation of Wycombe wards by English decile, 2009



Source: DCLG, 2012

Micklefield ranks 1,670<sup>th</sup> out of all wards in England based on the Index of Multiple Deprivation<sup>ii</sup>; this makes it among the more deprived wards in England, well below Wycombe's **average rank of 5,471<sup>st</sup>**, demonstrating that the ward is much more deprived than the district as a whole.

Chart 5: Comparative deprivation by IMD domain in Micklefield



Source: DCLG, 2010

The wards in Wycombe most closely matching Micklefield's deprivation profile are presented in Table 3. Nationally, the closest matches are Lewsey (Luton), Pitsea North West (Basildon) and Swanley St Mary's (Sevenoaks) while Oakridge & Castlefield and Bowerdean are the most similar in Wycombe ranking as the second and 174<sup>th</sup> most similar of all English wards. Of the 25 Wycombe wards sixth are among the 1,000 best matches, however Lacey Green, Speen & the Hampdens is only the 7,643<sup>rd</sup> closest match.

Table 3: Deprivation Nearest Neighbours

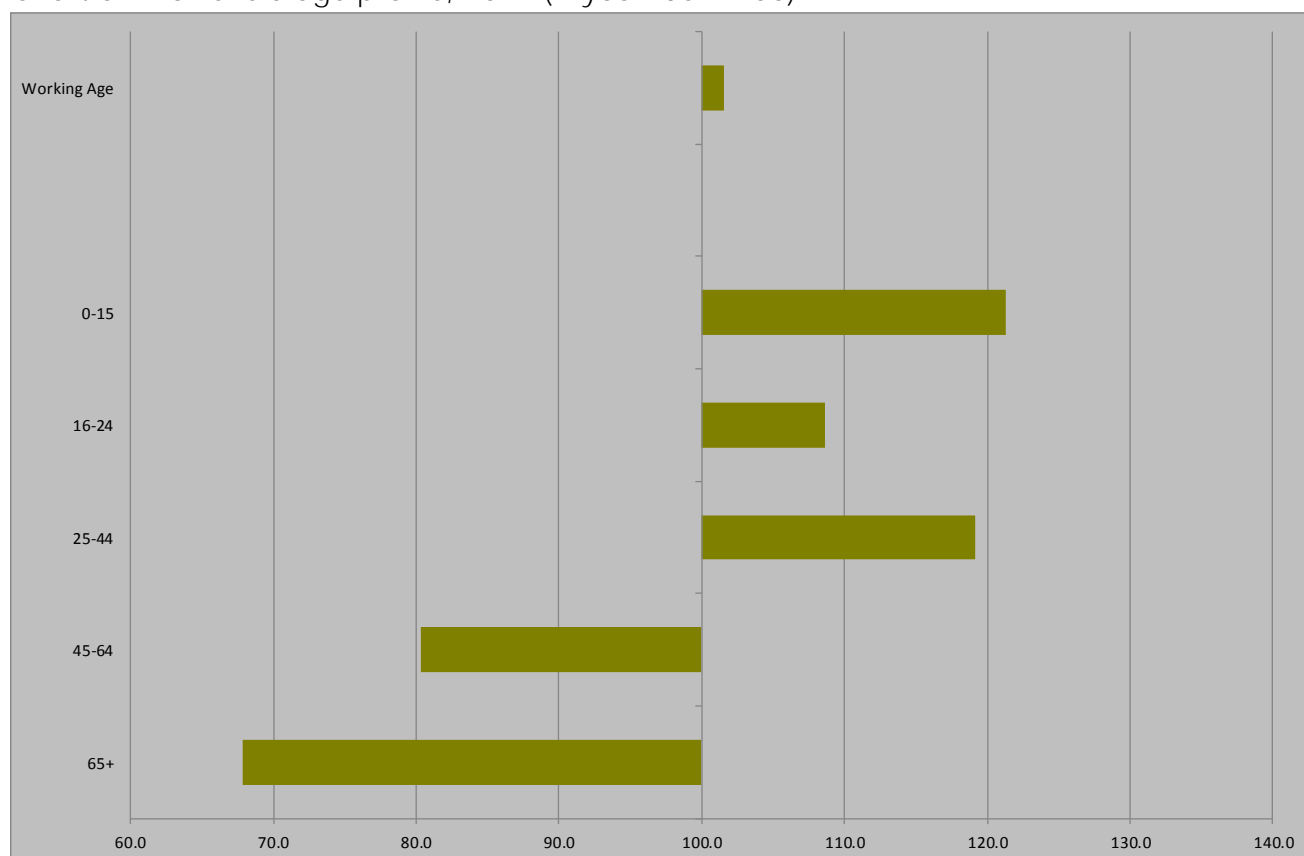
Ward	IMD	Income	Employment	Health	Education	Housing	Crime	Living environment
Micklefield	81.8	89.1	74.2	67.5	85.3	70.1	90.4	34.4
Oakridge and Castlefield	79.9	89.2	72	70.5	85	62.9	83.4	37.6
Bowerdean	65.5	82.3	52.2	50.8	72.5	71.5	68.5	36.2
Disraeli	62.3	69.7	58.1	49.3	72.5	61.8	83.1	23.9
Totteridge	62.1	77.5	45.3	56.6	64.5	65.9	84.3	17.1

Source: DCLG, 2010

## 6.0 Demography

At 34.6 years, Micklefield's **average age** is below the 39.4 recorded across Wycombe as well as the county average of 41.0. This makes Micklefield one of the younger wards in England as suggested by the over-representation of 0-44 year olds in Chart 6. In terms of age structure, two of the wards in Wycombe most similar to Micklefield are Ryemead and Sands with average ages of 34.3 and 34.6 respectively.

Chart 6: Micklefield age profile, 2011 (Wycombe = 100)



Source: Census, ONS, 2013

Micklefield has a higher proportion of working age residents than Wycombe at 64.5 per cent. This ranks Micklefield at 2,683<sup>rd</sup> of all wards in England based on proportion of residents at working age. Micklefield has a high proportion of those aged 0-15 at 24.4 per cent. This ranks Micklefield at 325<sup>th</sup> of all wards in England putting it among the top 20 per cent of all wards in England for residents this age bracket.

Table 4: Wycombe's demography by ward

	0-15	16-64	65+
Wycombe	20.1	63.5	16.4
Abbey	16.6	72.5	10.9
Bledlow and Bradenham	18.2	64.9	16.9
Booker and Cressex	16.3	62.1	21.6
Bourne End-cum-Hedsor	16.3	60.3	23.4
Bowerdean	24.1	67.6	8.4
Chiltern Rise	20.6	63.4	16.0
Disraeli	20.9	69.2	9.9
Downley and Plomer Hill	22.0	61.6	16.5
Flackwell Heath and Little Marlow	18.7	59.7	21.5
Greater Hughenden	18.7	60.7	20.6
Greater Marlow	23.7	59.8	16.4
Hambleden Valley	19.9	60.7	19.4
Hazlemere North	20.1	58.3	21.6
Hazlemere South	21.4	61.4	17.2
Icknield	18.5	58.6	22.9
Lacey Green, Speen and the Hampdens	22.6	60.1	17.2
Marlow North and West	18.9	58.8	22.3
Marlow South East	19.3	63.6	17.1
Micklefield	24.4	64.5	11.1
Oakridge and Castlefield	25.5	67.1	7.5
Ryemead	20.1	70.2	9.6
Sands	21.7	68.9	9.4
Stokenchurch and Radnage	18.7	64.4	16.9
Terriers and Amersham Hill	19.3	68.6	12.1
Totteridge	20.1	63.1	16.8
The Risboroughs	16.9	57.8	25.2
The Wooburns	19.5	65.5	15.0
Tylers Green and Loudwater	19.7	65.6	14.8

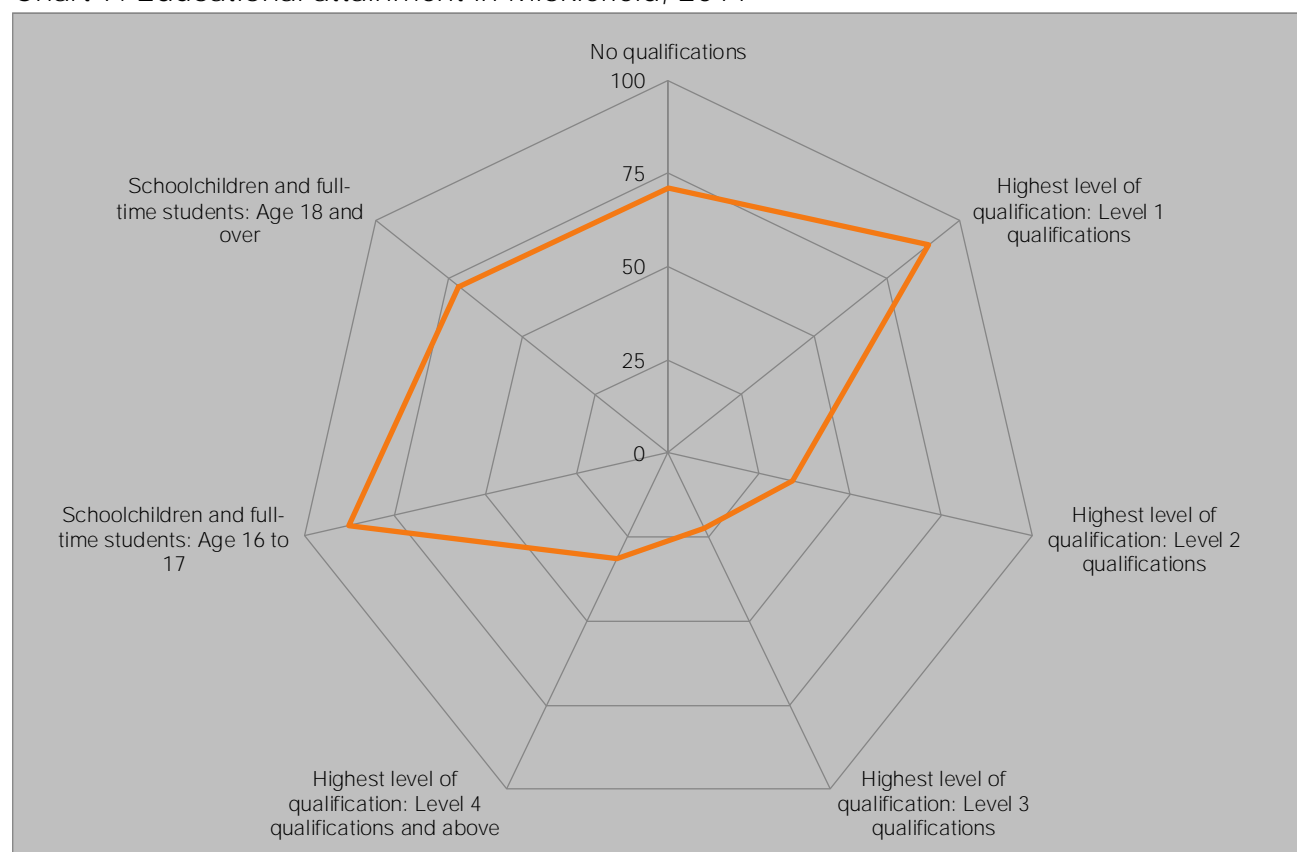
Source: Census, 2011

## 7.0 Educational attainment

Wycombe is one of the best qualified places in the country, with only 17.0 per cent of residents aged 16 and over holding no qualifications, well below the 22.5 per cent recorded across the country as a whole, while 34.2 per cent hold degree level qualifications, well above the national level of 27.4 per cent.

Micklefield's population has a lower educational attainment than the district's overall, with 26.0 per cent having no qualifications and only 21.5 per cent educated to degree level or higher. There is a total of 3.4 per cent of Micklefield residents who are schoolchildren or full-time students aged 16 to 17. This is high in comparison to other wards in Wycombe as well as other wards across England. The ward's performance compared to all wards in England is presented in Chart 7 below.

Chart 7: Educational attainment in Micklefield, 2011



Source, Census, 2011

Micklefield is most similar to Kingsweston (Bristol, City of), Hangleton & Knoll (Brighton & Hove) and Kempston North (Bedford) of all English wards with regard to educational attainment. In the district the most similar wards are Oakridge & Castlefield, Bowerdean and Totteridge with only three of the other 25 wards ranking inside the top 1000 matches and with Hambledon Valley ranking outside the top 8,000 along with Bledlow and Bradenham.

Table 5: Educational attainment nearest neighbours, 2011

	No qualifications	Highest level of qualification: Level 1 qualifications	Highest level of qualification: Level 2 qualifications	Highest level of qualification: Level 3 qualifications	Highest level of qualification: Level 4 qualifications and above	Schoolchildren and full-time students: Age 16 to 17	Schoolchildren and full-time students: Age 18 and over
Micklefield	26.0	16.8	15.5	10.7	21.5	3.4	3.4
Oakridge and Castlefield	26.8	15.4	12.4	11.2	20.4	3.4	10.6
Bowerdean	19.6	14.2	14.7	11.8	27.1	4.0	8.8
Totteridge	22.5	13.7	15.1	11.5	27.2	2.8	5.0
Booker and Cressex	27.6	14.8	13.1	10.7	24.1	2.4	3.2
Stokenchurch and Radnage	19.6	14.8	15.9	10.9	30.4	3.1	2.0

Source: Census, ONS, 2011

## 7.1 Micklefield **Schools' OFSTED reports**

Buckinghamshire has the strongest schools performance any LEP<sup>iii</sup>, with over a quarter of school leavers' going on to a Russell Group university, including 3.7 per cent to Oxbridge, and 88.0 per cent of young people in the county achieving at least NVQ level 2 by 19. Micklefield's schools make a full contribution to that performance as demonstrated by their most recent OFSTED reports, which are summarised below.

## 7.2 Ash Hill Primary School

In 2012, 72 per cent of pupils attained Level 4 or higher in the Key Stage 2 English test and assessment. The result placed the school in the lowest 20 per cent of all schools. In reading, 80 per cent of pupils attained Level 4 or higher and in writing, 52 per cent of pupils attained Level 4 or higher. For reading, this is an increase of one percentage point on 2011 placing the school in the bottom 40 per cent. In writing, the result placed the school in the lowest 20 per cent of all schools. In maths, 68 per cent of pupils attained Level 4 or above in the Key Stage 2 test and assessment placing the school in the lowest 20 per cent of all schools.

In 2012, 72 per cent of pupils attained expected progress in English and 72 per cent of pupils attained expected progress in maths. For maths this marked a decrease of seven percentage points and in both cases the school was placed in the lowest 20 per cent of all schools based on the result. In 2012, the attendance rate for the school was 95 per cent, this is an increase of 1.1 per cent on the previous year placing the school in the lowest 40 per cent of all schools.

## 8.0 Buckinghamshire Business First in Micklefield

Of the 36 businesses in Micklefield, 14, or 38.9 per cent are Buckinghamshire Business First members. BBF members in the ward are presented in Table 6 below.

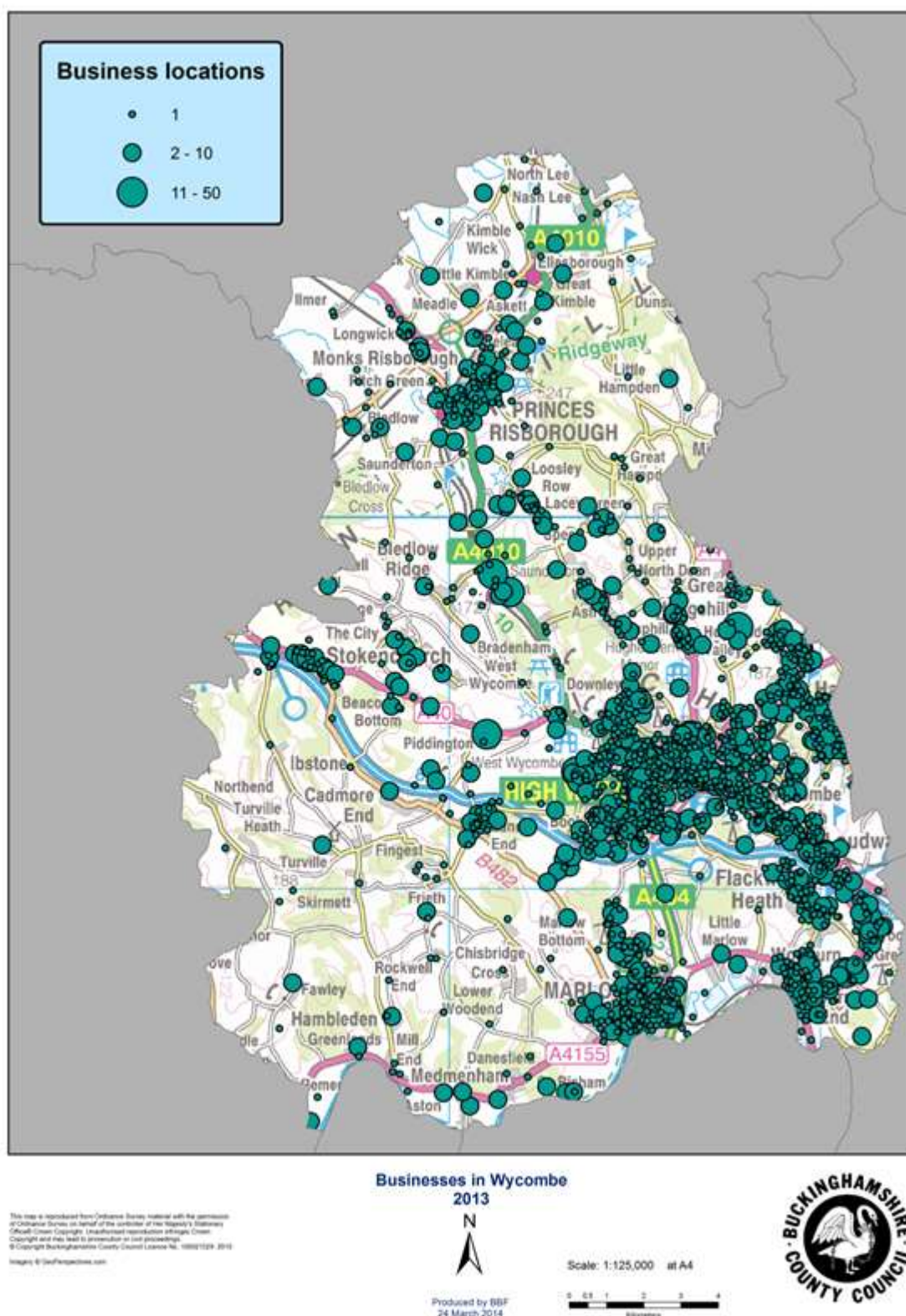
Table 6: BBF members in Micklefield, November 2013

Business	Employee Size Band
Les Read	
Ant Telecommunication	26 to 50
Phoenix I T	26 to 50
Ecobrand	1 to 5
Make Our Day Ltd	1 to 5
Swallow Systems	1 to 5
Allgrass Gardening Services	1 to 5
Bucks Building & Improvements	1 to 5
Exudos Training Academy	1 to 5
NCI Production Films	1 to 5
DEA Direct	1 to 5
Catch a Thought	Self only
Driver Development Solutions	Self only
Debt Talk Ltd	Self only

BBF managed the **consultants' report that estimated HS2's cost to Buckinghamshire at £44m per annum during construction and will continue to lead on socio-economic work for Buckinghamshire as mitigation work progresses, having drafted the relevant section in the Buckinghamshire Blueprint document.**

## 9.0 Businesses in Wycombe

The distribution of businesses in Wycombe is shown in the map below. With 36 businesses, Micklefield has 1.0 per cent of the district's total, providing work for 0.5 per cent of the district's workforce.



<sup>i</sup> Travel to work data from the 2011 Census are expected to be released in 2014.

<sup>ii</sup> See <https://www.gov.uk/government/publications/english-indices-of-deprivation-2010>

<sup>iii</sup> See for example BBF's analysis of school leavers' destinations and educational attainment aged 19: <http://www.bbf.uk.com/download/226> and <http://www.bbf.uk.com/download/228>